



<b>ATTENDANCE FIGURES (ALL CENTRES) COURSES, SEMINARS AND SCHOOL FOR LEGAL PRACTICE</b>
---

Page	Schedule
2.	Part-time Courses Modules I & II
3.	Full-time Courses : Modules I & II
4.	Conveyancing Practice
5.	Notarial Practice
6.	Distance Education Courses
7.	Practice Management Courses
8.	Seminars
9.	School for Legal Practice

<b>STATISTICS : UNIVERSITIES</b>
----------------------------------

13.	First time, First year registrations
18.	Graduates
23	Final Year Students

<b>ATTORNEYS &amp; CONTRACTS OF ARTICLES</b>
--

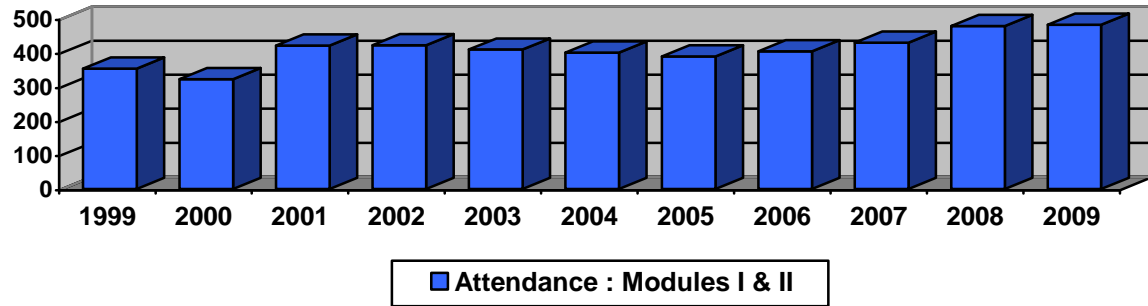
26.	Attorney's Profession
27.	Practising Attorneys
30.	Articles Registered
33.	New Admissions Total
34.	New Admissions - Gender
35.	New Admissions - Race
36.	New Admissions - Per Province – Gender
39.	New Admissions – Per Province – Race

*Compiled by  
Legal Education and Development  
Law Society of South Africa  
Dianne Angelopulo*

**ATTENDANCE FIGURES : PART-TIME & EVENING COURSES [MODULES I & II]  
1998 – 2009**

<b>CENTRE</b>	<b>1999 I &amp; II</b>	<b>2000 I &amp; II</b>	<b>2001 I &amp; II</b>	<b>2002 I &amp; II</b>	<b>2003 I &amp; II</b>	<b>2004 I &amp; II</b>	<b>2005 I &amp; II</b>	<b>2006 I &amp; II</b>	<b>2007 I &amp; II</b>	<b>2008 I &amp; II</b>	<b>2009 I &amp; II</b>
<b>CTN P/T</b>	99	86	81	98	81	99	89	92	87	119	111
<b>UKZN[D] P/T</b>	57	47	43	37	46	40	45	40	56	48	54
<b>UNISA PT</b>	90	65	80	65	50	43	41	50	33	34	44
<b>UJ P/T</b>	33	39	43	67	51	47	52	40	49	50	36
<b>UJ EVENING I</b>	75	86	125	156	104	113	86	101	125	61	138
<b>UJ EVENING II [ ex UW EVEN]</b>					78	59	77	82	80	167	100
<b>WWB EVE</b>			50								
<b>TOTAL</b>	354	323	422	423	410	401	390	405	430	479	483

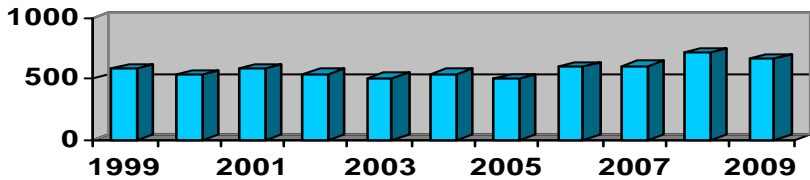
**Modules I & II Attendance Graph**



**ATTENDANCE FIGURES : FULL-TIME [MODULES 1 & II]  
1998 – 2009**

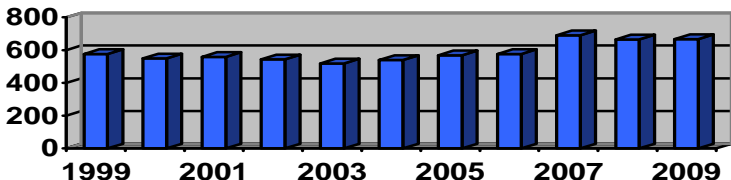
CENTRE	1999 -	2000 -	2001 -	2002 -	2003 -	2004 -	2005 -	2006 -	2007 -	2008 -	2009 -	1999	2000	2001	2002	2003	2004	2005	2006	2007	2008	2009
<b>CTN</b>	69	76	80	94	85	99	98	128	110	160	142	76	93	75	84	79	97	94	114	129	147	131
<b>CTN I</b>																						
<b>CTN II</b>																						
<b>UPE</b>	62	64	53	56	53	62	56	56	58	86	74	71	69	60	55	53	61	45	45	81	74	80
<b>UND</b>	93	63	81	64	63	64	44	44	65	75	68	85	61	80	66	61	67	71	71	83	65	62
<b>UNP</b>	44	34	44	32	30	43	58	53	56	45	55	41	37	43	44	39	46	53	56	57	54	49
<b>UP (A)</b>	85	84	69	64	54	47	40	48	50	56	52	79	75	58	56	50	50	44	45	47	40	56
<b>UP (E)</b>	35	45	53	49	47	30	50	52	58	89	82	37	31	44	58	56	43	54	54	67	91	85
<b>UW</b>	92	78	101	108	86	104	94	110	110	101	99	93	87	109	103	93	80	128	99	129	106	104
<b>NWEST [POTCH]</b>	55	42	49	28	41	35	27	45	40	36	36	50	44	49	33	38	26	37	39	37	36	38
<b>FS[BFN]</b>	46	48	50	46	52	39	36	65	59	62	57	45	52	42	44	49	54	43	54	61	53	63
<b>PLK</b>						16											16					
<b>TOTAL</b>	<b>581</b>	<b>534</b>	<b>580</b>	<b>541</b>	<b>511</b>	<b>539</b>	<b>503</b>	<b>601</b>	<b>606</b>	<b>710</b>	<b>665</b>	<b>577</b>	<b>549</b>	<b>560</b>	<b>543</b>	<b>518</b>	<b>540</b>	<b>569</b>	<b>577</b>	<b>691</b>	<b>666</b>	<b>668</b>

**Module I Attendance Graph**



■ Full-time Attendance : Module I

**Module II Attendance Graph**

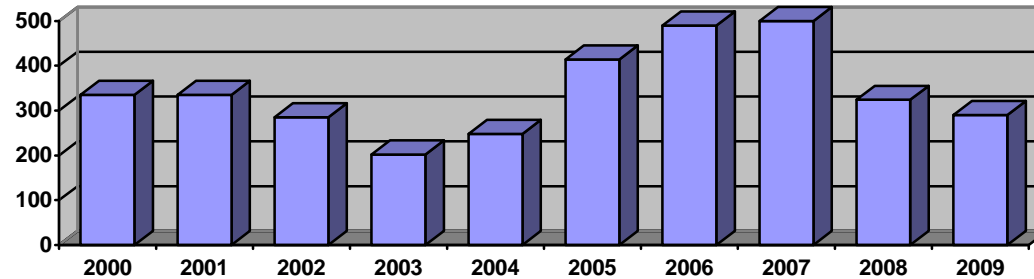


■ Full-time Attendance : Module II

**ATTENDANCE FIGURES : CONVEYANCING PRACTICE  
2000 – 2009**

CENTRE	2000	2001	2002	2003	2004	2005	2006	2007	2008	2009
CAPE TOWN	50	80	84	85	81	103	94	73	39	12
PORT ELIZABETH	---	29	18	---	15	21	29	33	---	12
EAST LONDON	---	---	---	---	31	22	---	22	14	11
BLOEMFONTEIN	---	---	---	11	---	---	---	13	---	12
PRETORIA	62	92	110	70	110	114	100	132	106	97
JOHANNESBURG	62	71	99	103	49	134-	97	110	69	37
DURBAN	74	86	128	101	104	123	143	135	84	83
POLOKWANE	---	27	27	---	14-	---	---	15	---	---
UMTATA		29	24	---	---	---	---	---	---	26
NELSPRUIT	---	---	---	---	---	---	---	---	12	---
KIMBERLEY			---	---	---	---	---	---	---	---
<b>TOTAL</b>	<b>248</b>	<b>260</b>	<b>490</b>	<b>370</b>	<b>404</b>	<b>517</b>	<b>463</b>	<b>533</b>	<b>324</b>	<b>290</b>

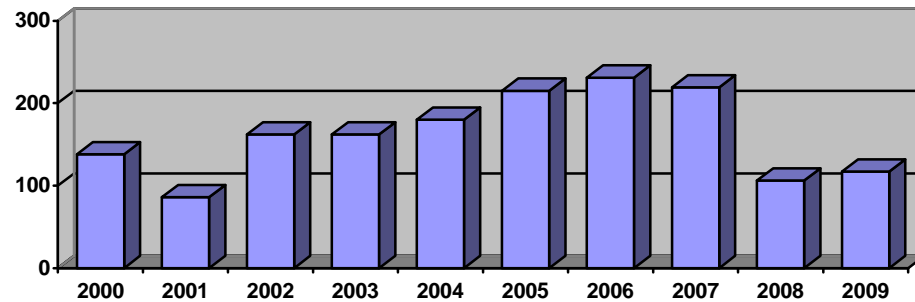
**Conveyancing Attendance Course Figures**



**ATTENDANCE FIGURES : NOTARIAL PRACTICE  
2000 – 2008**

CENTRE	2000	2001	2002	2003	2004	2005	2006	2007	2008	2009
CAPE TOWN	14	14	22	27	47	36	36	40	12	16
PORT ELIZABETH	---	---	---	---	---	---	---	14	---	---
EAST LONDON	---	---	---	---	---	---	---	---	---	---
BLOEMFONTEIN	---	---	---	---	---	---	---	---	---	---
PRETORIA	47	47	65	51	68	78	69	53	39	26
JOHANNESBURG	45	25	37	56	20	66	57	51	23	30
DURBAN	32	---	38	28	45	35	69	61	32	45
POLOKWANE	---	---	---	---	---	---	---	---	---	---
NELSPRUIT	---	---	---	---	---	---	---	---	---	---
KIMBERLEY	---	---	---	---	---	---	---	---	---	---
UMTATA	---	---	---	---	---	---	---	---	---	---
<b>TOTAL</b>	<b>138</b>	<b>86</b>	<b>162</b>	<b>162</b>	<b>180</b>	<b>215</b>	<b>231</b>	<b>219</b>	<b>106</b>	<b>117</b>

**Notarial Attendance Course Figures**



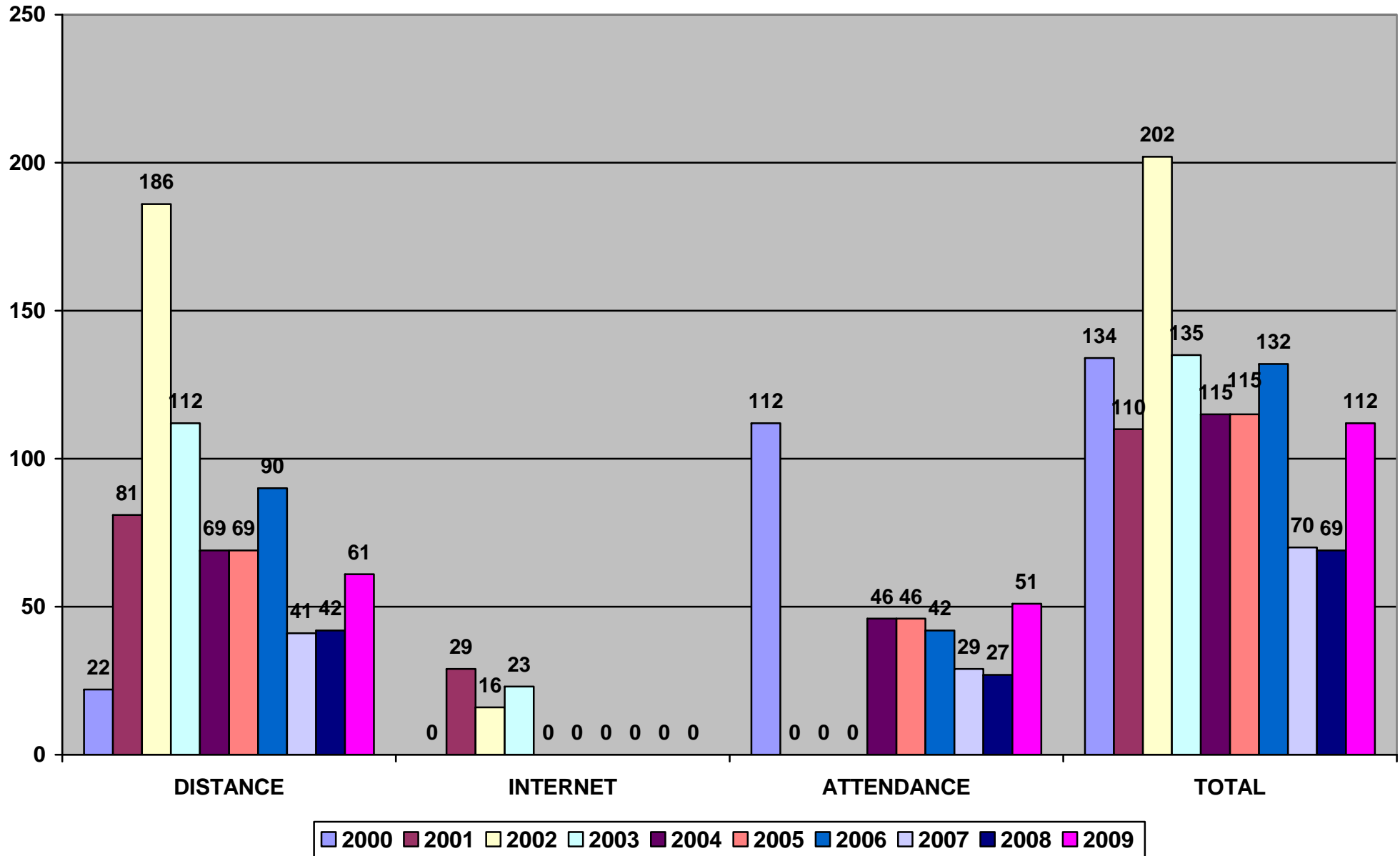
**DISTANCE EDUCATION COURSES  
STUDENT REGISTRATIONS**

COURSE	1998	1999	2000	2001	2002	2003	2004	2005	2006	2007	2008	2009
<b>CERTIFICATE IN DECEASED ESTATES</b>	121	105	70	81	57	52	39		38	34	79	94
<b>DIPLOMA IN LABOUR LAW</b>			25		33		20		21	27	26	26
<b>CONVEYANCING</b>	278	87	68	57	99	49	51	56	44	48	50	20
<b>NOTARIAL PRACTICE</b>	152	106	51	38	58	42	33	29	30	24	31	12
<b>DIPLOMA TAX PRACTICE</b>	<b>80</b>		<b>57</b>			<b>36</b>	<b>36</b>		<b>30</b>			
<b>INCOME TAX</b>										16	17	
<b>VAT</b>										12		
<b>DONATIONS TAX</b>										4	12	
<b>TRANSFER DUTY &amp; ESTATE DUTY</b>										3		
<b>DIPLOMA CORPORATE LAW PRACTICE</b>		46		<b>61</b>					45	25	57	38
<b>INSOLVENCY</b>									22	19		

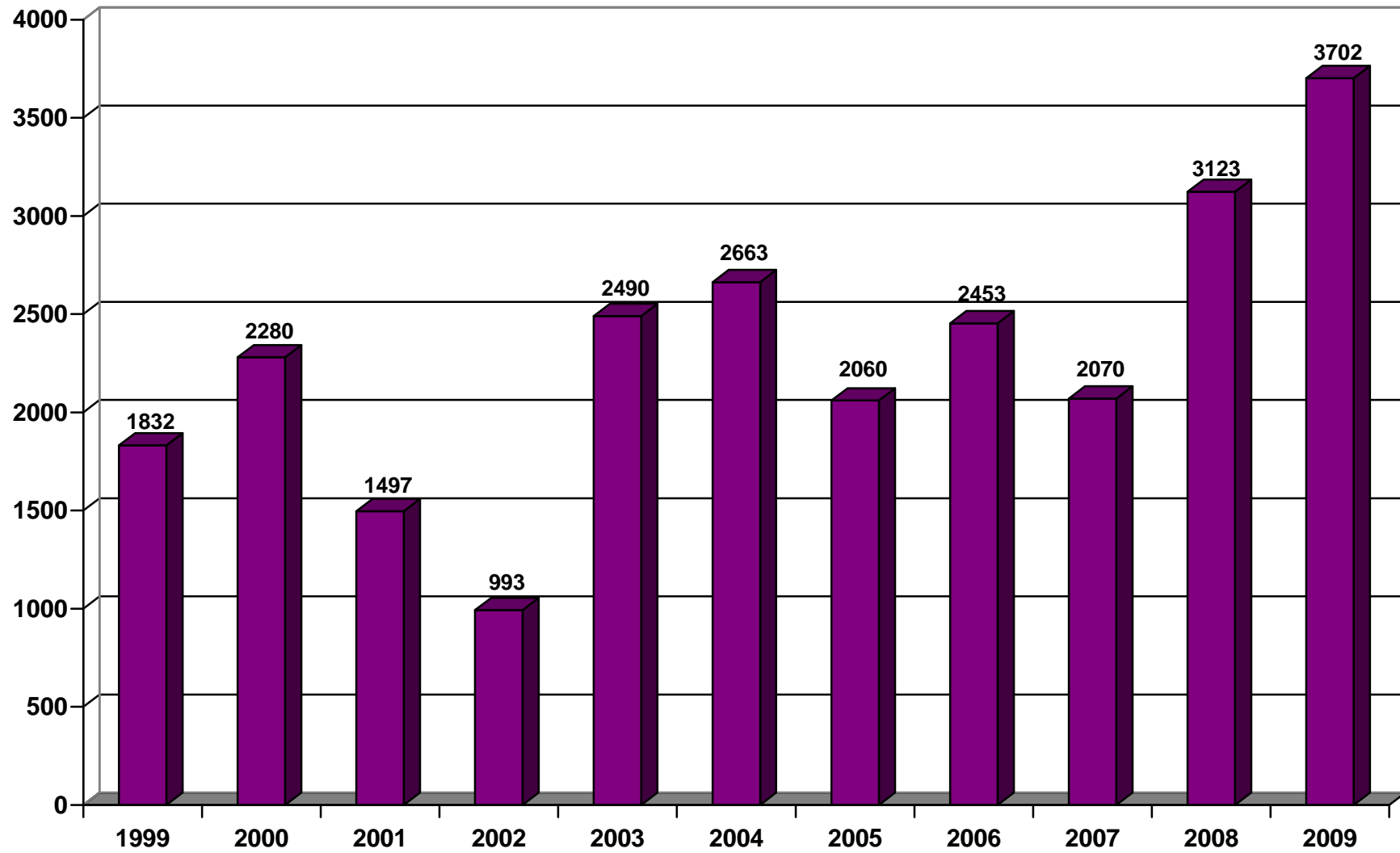
Diploma Tax Practice  
Diploma Corporate Law Practice  
Tax modules

Not offered in 2005  
Not offered in 2005  
Not offered in 2009

PRACTICE MANAGEMENT : ENROLMENT RECORD



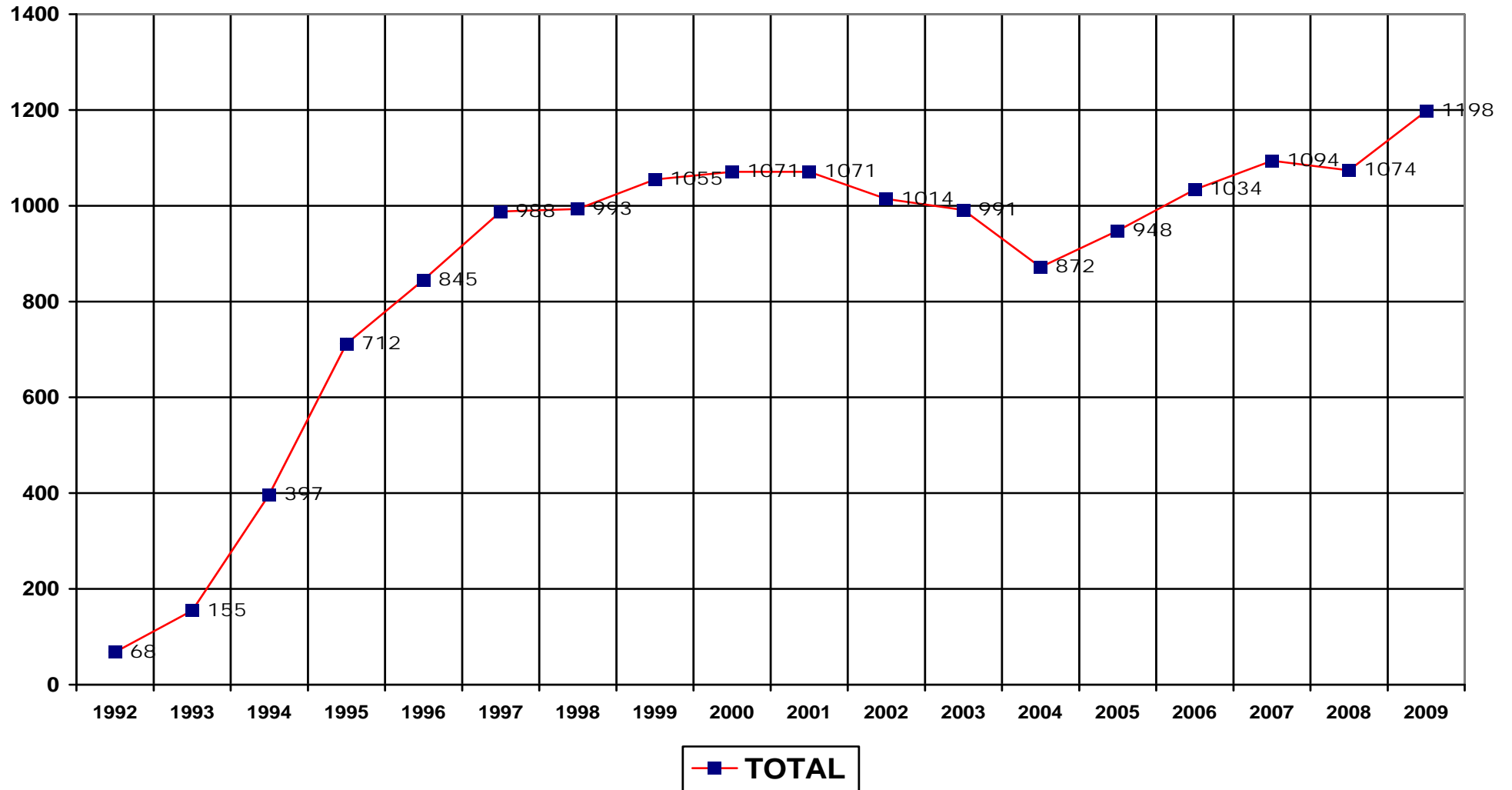
**SEMINARS : ATTENDANCE**  
**[658 - SETA SUBSIDISED SEMINARS]**



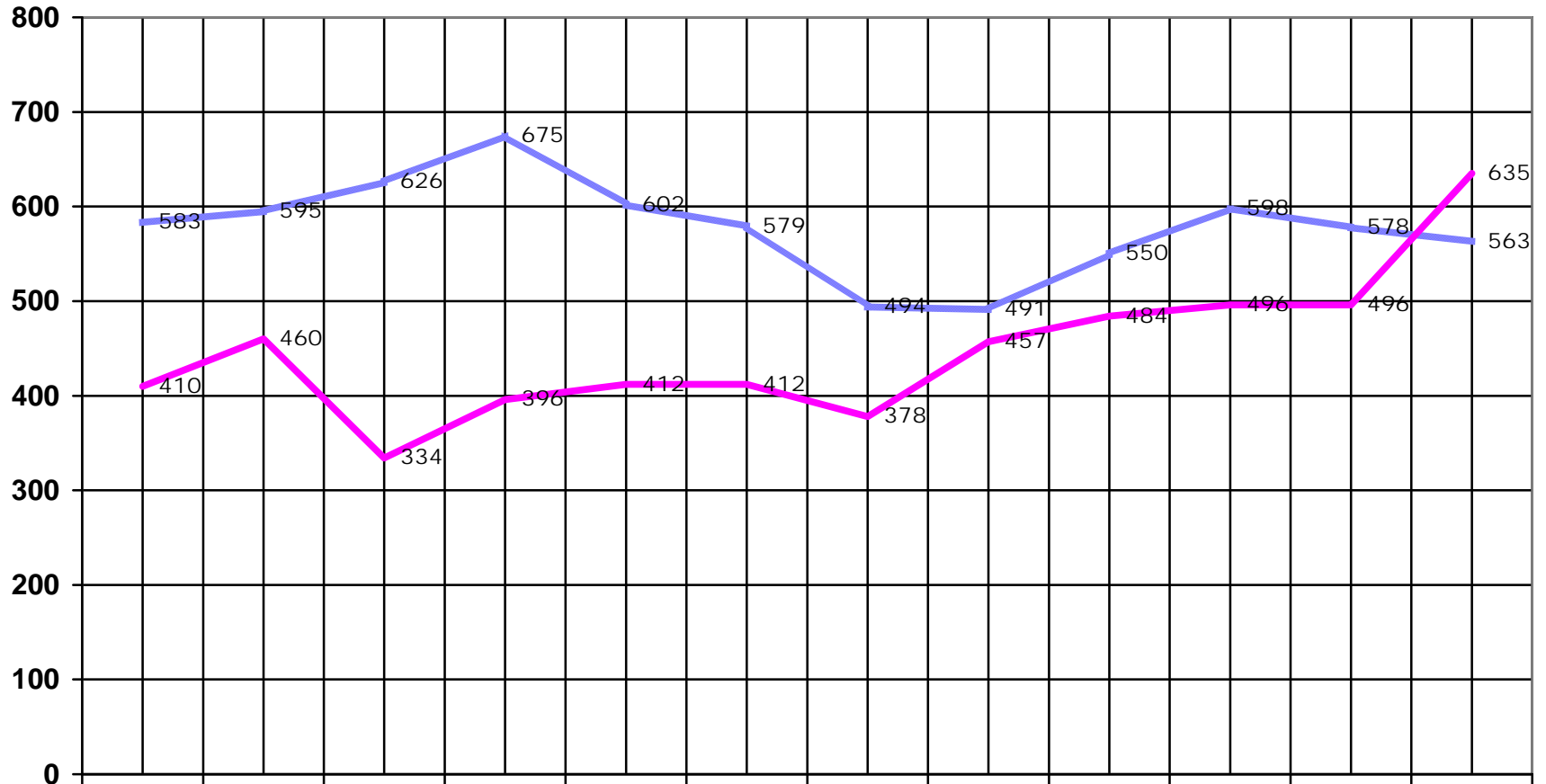


# SCHOOL FOR LEGAL PRACTICE

## ATTENDANCE 1992 – 2009

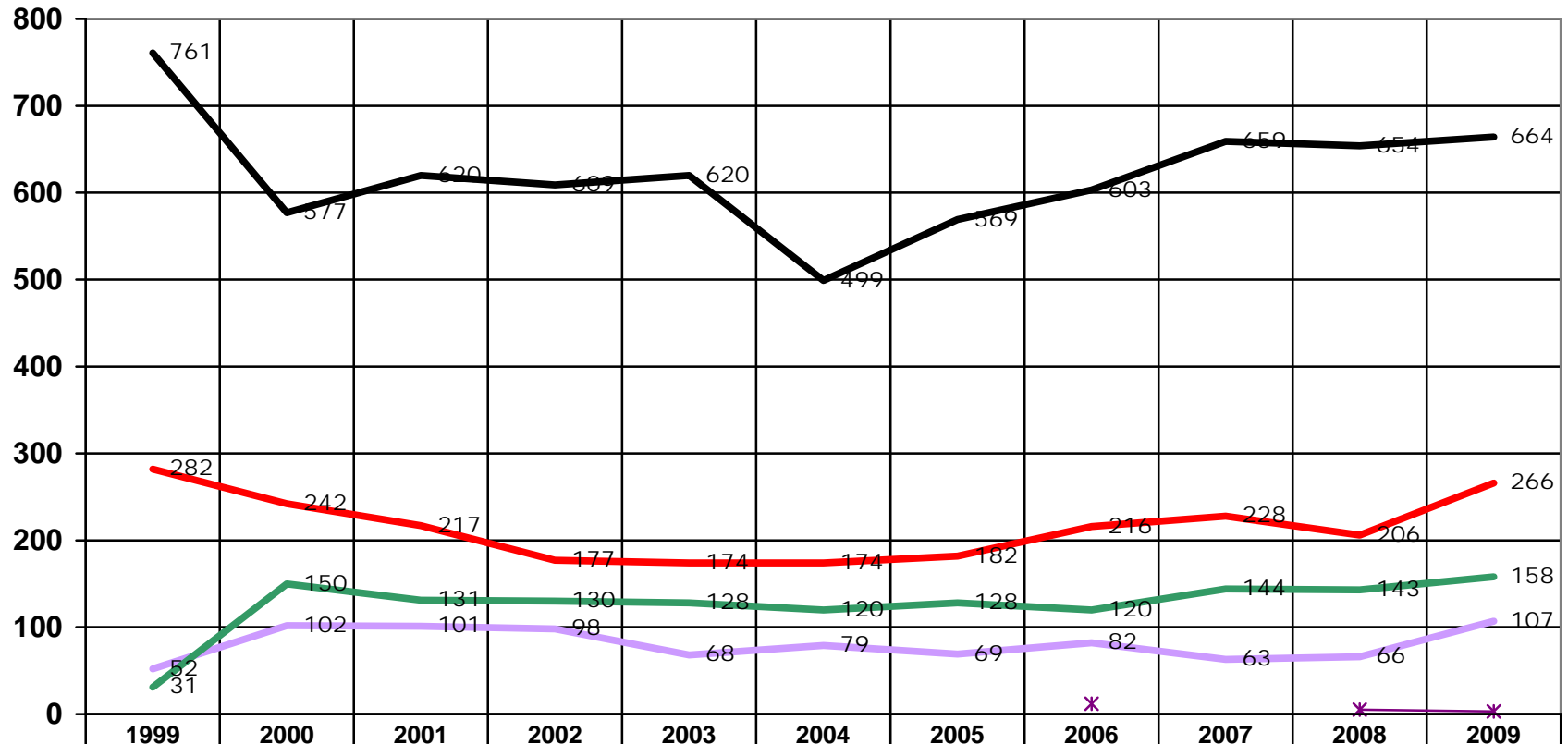


**ATTENDANCE : SCHOOL FOR LEGAL PRACTICE : GENDER**



	1998	1999	2000	2001	2002	2003	2004	2005	2006	2007	2008	2009
<b>MALE</b>	583	595	626	675	602	579	494	491	550	598	578	563
<b>FEMALE</b>	410	460	334	396	412	412	378	457	484	496	496	635

ATTENDANCE : SCHOOL FOR LEGAL PRACTICE : RACE



	1999	2000	2001	2002	2003	2004	2005	2006	2007	2008	2009
— AFRICAN	761	577	620	609	620	499	569	603	659	654	664
— WHITE	282	242	217	177	174	174	182	216	228	206	266
— COLOURED	52	102	101	98	68	79	69	82	63	66	107
— ASIAN	31	150	131	130	128	120	128	120	144	143	158
— * NOT SPECIFIED								12		5	3

## UNIVERSITY STATISTICS

- 2003      STATISTICS NOT RECEIVED FROM ;
- UNIVERSITY OF ZULULAND
  - VISTA UNIVERSITY
- 2004      STATISTICS NOT RECEIVED FROM :
- UNIVERSITY OF ZULULAND
- 2005      STATISTICS NOT RECEIVED FROM :
- UNIVERSITY OF ZULULAND
  - UNIVERSITY OF KWAZULU NATAL – HOWARD COLLEGE AND WESTVILLE CAMPUS  
- RACE AND GENDER OF THE ABOVE UNIVERSITY NOT INCLUDED IN THE GRAPHS
- 2006      STATISTICS NOT RECEIVED FROM :
- UNIVERSITY OF ZULULAND
- 2007      STATISTICS NOT RECEIVED FROM :
- NORTH WEST UNIVERSITY – MAFIKENG CAMPUS
- 2008      STATISTICS NOT RECEIVED FROM :
- UNIVERSITY OF ZULULAND
- 2009      STATISTICS NOT RECEIVED:
- UNIVERSITY OF ZULULAND
- 2010      STATISTICS NOT RECEIVED:
- WALTER SISULU UNIVERSITY
  - UNIVERSITY JOHANNESBURG – ONLY PARTIAL

**PLEASE NOTE : THE TOTALS MAY VARY AS NOT ALL STUDENTS INDICATE RACE AND GENDER**

FIRST TIME, FIRST YEAR REGISTRATONS

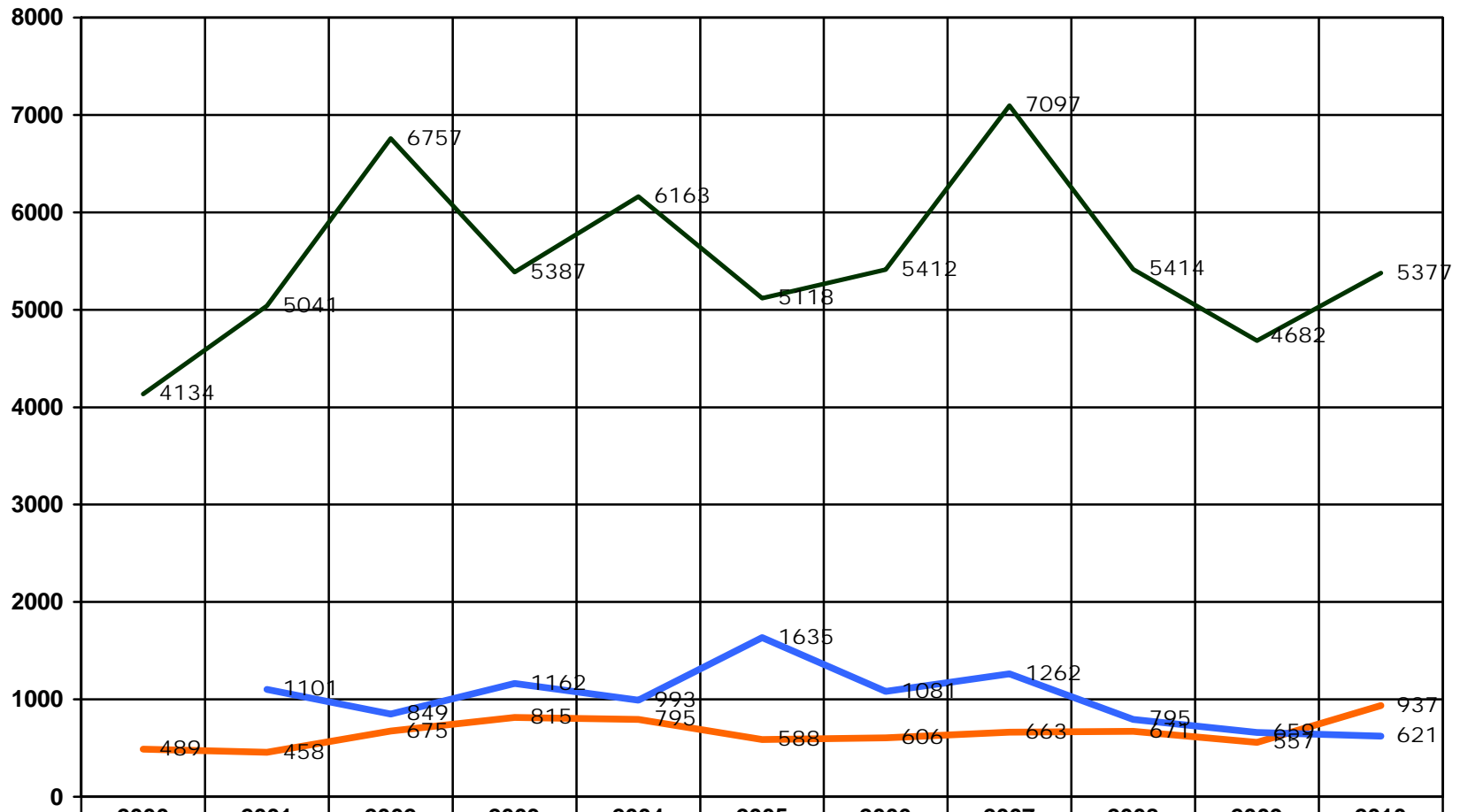
YEAR	2005			2006			2007			2008			2009			2010		
UNIVERSITY	LLB	BA (LAW)	BCOM (LAW)	LLB	BA (LAW)	BCOM (LAW)	LLB	BA (LAW)	BCOM (LAW)	LLB	BA (LAW)	BCOM (LAW)	LLB	BA (LAW)	BCOM (LAW)	LLB	BA (LAW)	BCOM (LAW)
Cape Town	127	54	22	104	76	34	77	71	41	102			68			106		
Fort Hare	227			160		25	201			151			198			197		
Free State	328		77	237		67	234	10*	50	204		50	285	23	66	165	<sup>1</sup> [FP 15]	37
Johannesburg	160	48	111	228	57	86	151	70	98	264	63	87	251	33	62	DID NOT REPLY		
KwaZulu Natal Howard College	282			310			240			223			309			230		
Pietermaritzburg	54			60			67			56			94			100		
Limpopo	394		44	213	7		1176	17	42	300			190			300	454	
North-West Mafikeng	112			116			Did not reply to request for stats			19			151			177		
North-West Potchefstroom	211	25	92	196	34	96	202	86	125	240	39	127	214	96	70	125	82	61
N M M U	183		39	148		21	141		27	190		22	185		41	141		31
Pretoria	232	25	153	311	23	151	392	33	177	315	50	166	311	67	139	189	125	176
Rhodes		146	28		114	34		125	57		211	54		206	52		144	56
Stellenbosch	88	42	77	90	39	79	91	35	94	111	49	93	91	37	90	125	39	74
UNISA	1714		396	2022		371	3003		419	2604			1350			2140		

\* 2007 ONWARD – UNIVERSITY OF FREE STATE - NO LONGER OFFERS BA(LAW) – NEW DEGREE - BIUR(FP) – FINANCIAL PLANNING LAW DEGREE

YEAR	2005			2006			2007			2008			2009			2010		
UNIVERSITY	LLB	BA (LAW)	BCOM (LAW)	LLB	BA (LAW)	BCOM (LAW)	LLB	BA (LAW)	BCOM (LAW)	LLB	BA (LAW)	BCOM (LAW)	LLB	BA (LAW)	BCOM (LAW)	LLB	BA (LAW)	BCOM (LAW)
Venda	199	99		149	73	371	211	89		77	25		190			199		
Walter Sisulu	135			225			173			191			167			Did not reply		
Western Cape	306		441	313		42	292		46	329		45	63		17	477		52
Wits	170	83	81	414	153	75	145	94	86	321	224	151	404	118	122	532	77	134
Zululand	Did not reply			Did not reply			118			Did not reply			Did not reply			174		
Total	5118	588	1635	5412	606	1081	7097	663	1262	5414	671	795	4682	557	659	5377	937	621
TOTAL	7341			7099			9022			6880			5898			6932		

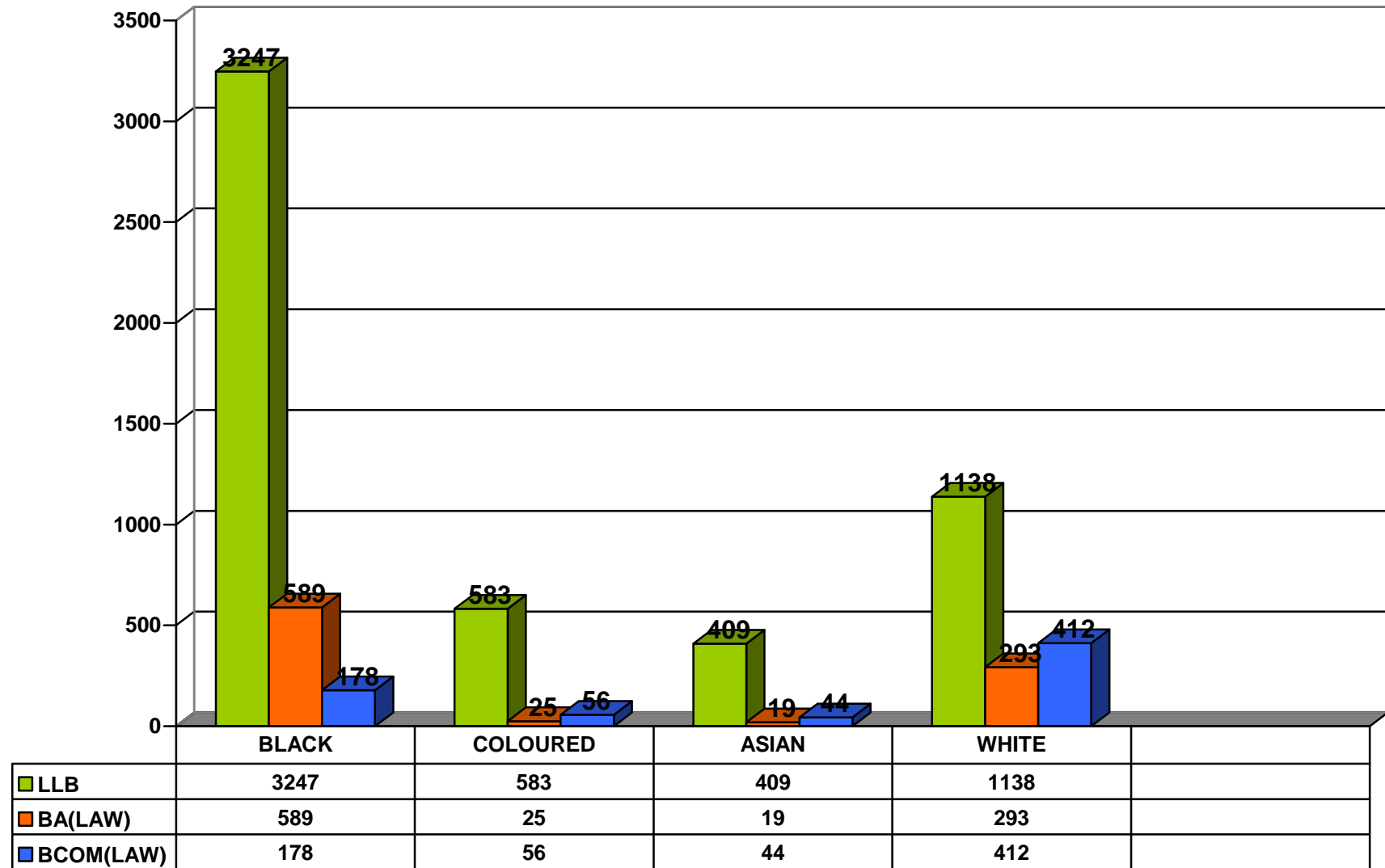
- RHODES UNIVERSITY – DO NOT ACCEPT FIRST YEAR LAW STUDENTS, ONLY POST-GRADUATES

### FIRST TIME, FIRST YEAR REGISTRATIONS



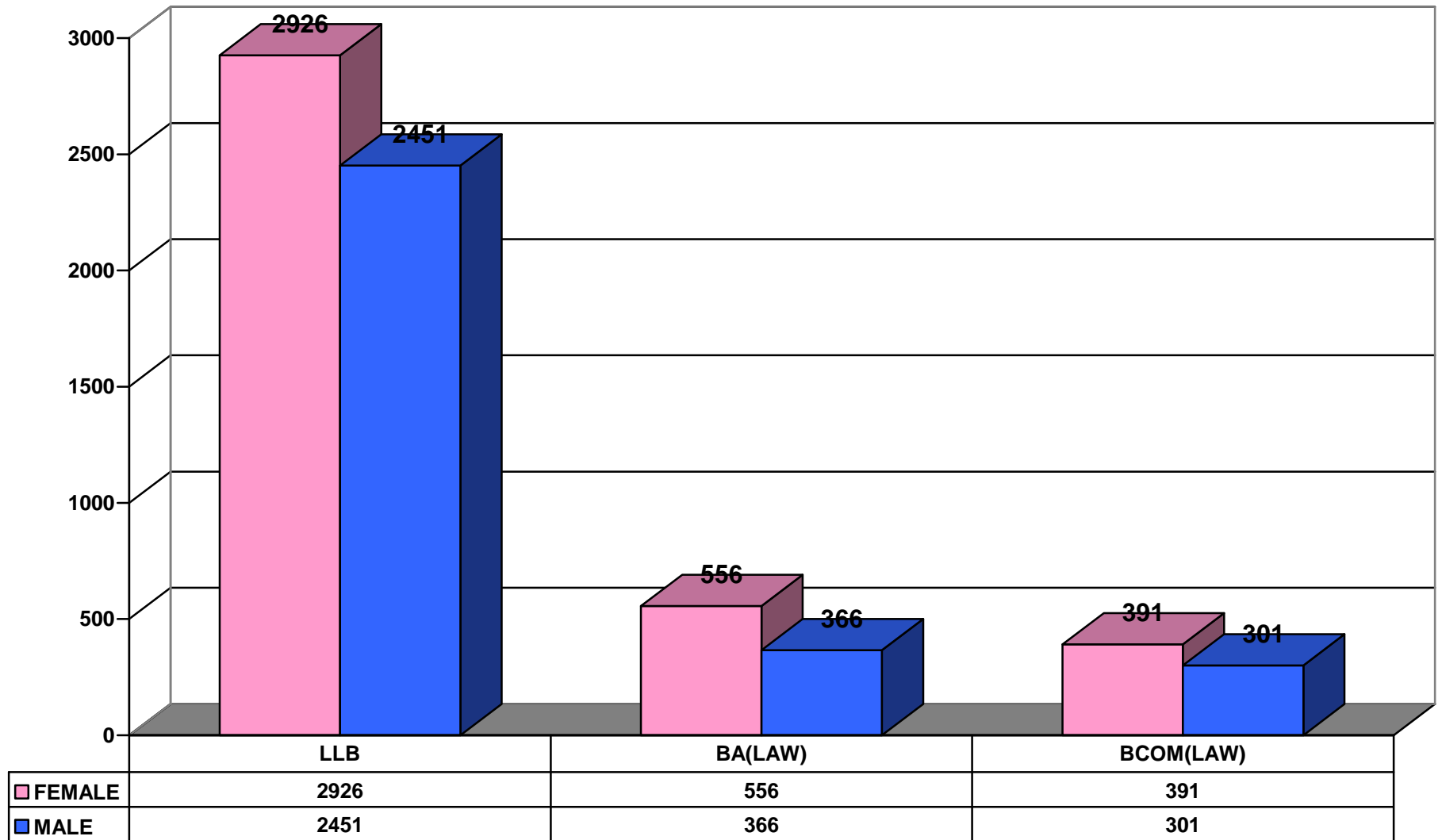
	2000	2001	2002	2003	2004	2005	2006	2007	2008	2009	2010
BA(LAW)	489	458	675	815	795	588	606	663	671	557	937
BCOM(LAW)		1101	849	1162	993	1635	1081	1262	795	659	621
LLB	4134	5041	6757	5387	6163	5118	5412	7097	5414	4682	5377

FIRST TIME : FIRST YEAR REGISTRATIONS : RACE 2010





FIRST TIME : FIRST YEAR REGISTRATION : GENDER 2010



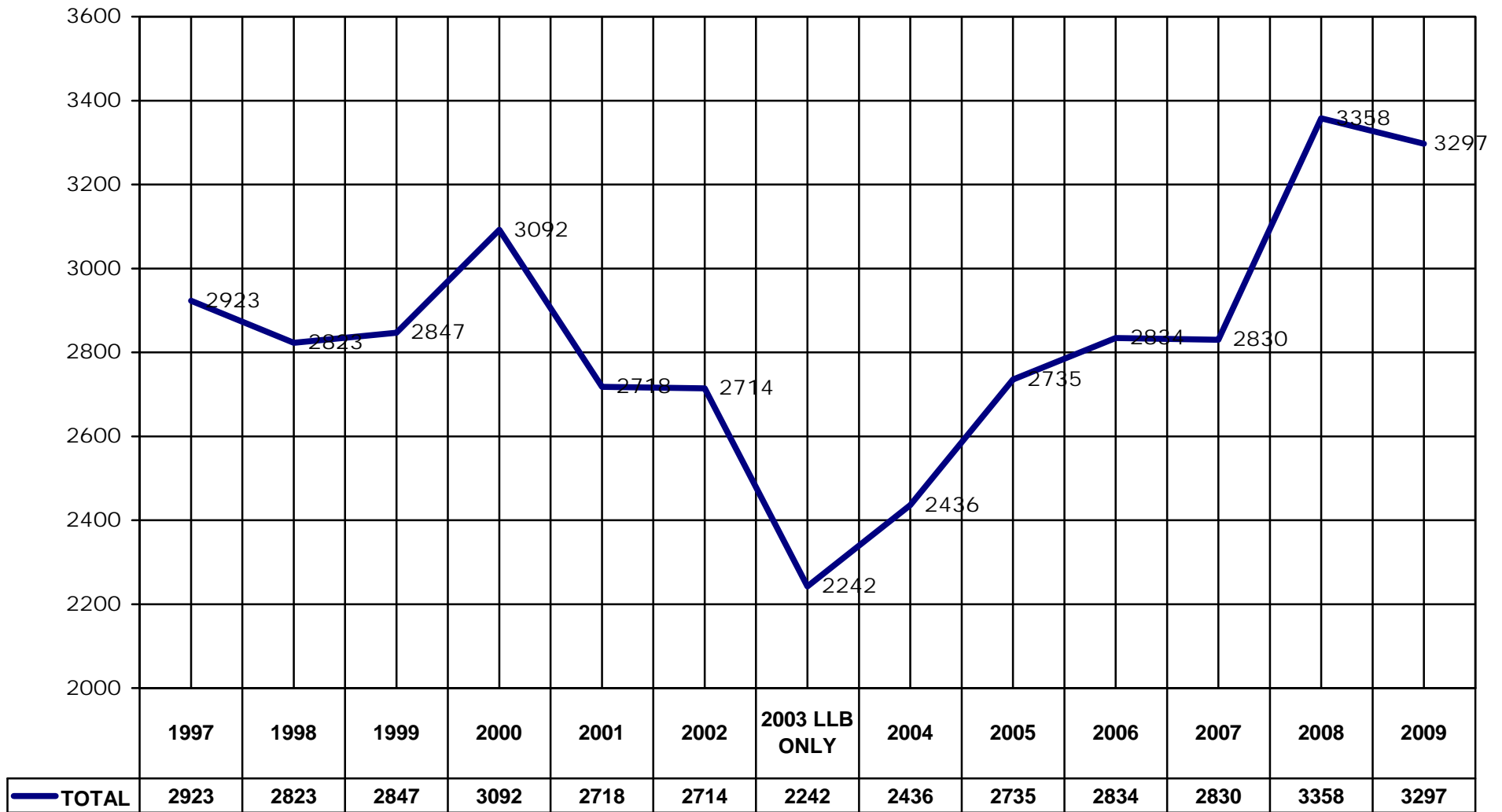
**NUMBER OF GRADUATES RECEIVED FROM INDIVIDUAL UNIVERSITIES**

UNIVERSITY	DEGREE	LLB												
		1997	1998	1999	2000	2001	2002	2003	2004	2005	2006	2007	2008	2009
Cape Town	LLB	114	86	93	74	75	63	84	75	113	107	110	119	87
Fort Hare	BPROC LLB	45 27	46 27	55 26	(43) (19)	12 35	23 81	63	89	130	89	136	130	44
Free State	BPROC LLB	66 50	60 46	54 46	23 72	19 51	9 78	65	83	81	63	95	123	112
Johannesburg	BPROC	65	62	52	56	15	8	116	126	222	216	243	206	521
KwaZulu-Natal - Howard College	BPROC LLB	90 120	67 151	17 188	17 180	1 150	- 123	177	(157)	177	198	200	222	221
KwaZulu Natal - Pietermaritzburg	BPROC LLB	15 73	8 82	18 80	18 51	20 51	1 49	42	44	63	48	65	82	62
KwaZulu Natal - Westville	BPROC LLB	86 101	65 72	(70) (40)	(67) (70)	52 105	12 127	37	(84)	46	93			
Limpopo	BPROC LLB	131 102	54 86	65 106	15 113	18 127	4 113	89	90	93	107	150	100	157
North-West – Mafikeng	BPROC LLB	15 26	19 28	15 55	(14) (65)	12 125	2 86	54	36	41	Did not reply	88	71	61
North-West Potchefstroom	BPROC LLB	60 44	47 42	31 46	11 112	3 75	1 71	76	56	88	85	107	171	195
NMMU	BPROC LLB	23 49	20 41	13 45	15 64	8 62	4 55	49	97	134	100	133	136	153
Pretoria	BPROC LLB	143 165	133 164	121 190	NOT AVAILABL E 329	8 293	2 234	232	339	378	478	379	819	353
Rhodes	LLB	40	25	27	35	35	44	44	52	56	56	62	53	70
Stellenbosch	LLB	98	116	96	88	150	131	113	120	132	112	64	60	70

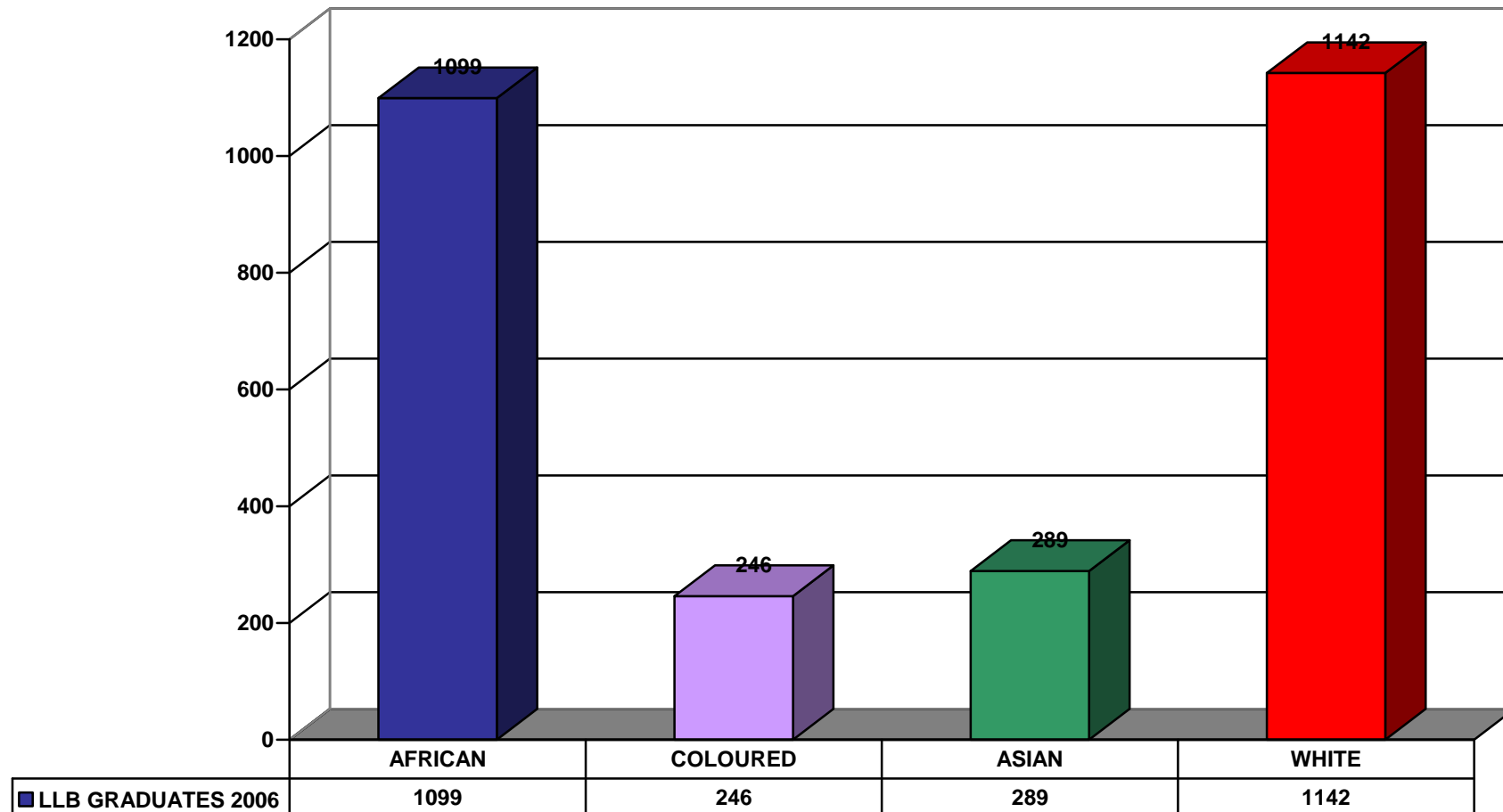
UNIVERSITY	DEGREE	LLB												
		1997	1998	1999	2000	2001	2002	2003	2004	2005	2006	2007	2008	2009
UNISA	BPROC LLB	240 376	240 382	141 263	141 264	167 337	303	344	386	441	500	500	361	524
Venda	BPROC LLB	33 4	15 11	17 9	(10) (12)	4 30	- 51	41	24	46	59	71	109	109
Vista	BPROC LLB	63 50	73 51	71 69	18 139	7 192	(145)							
Walter Sisulu (ex Transkei)	BPROC LLB	32 97	39 77	57 50	50 58	14 96	414 98	47	46	56	60	64	108	No reply
Western Cape	BPROC LLB	75 112	78 75	49 107	24 109	15 173	10 182	149	166	148	136	99	193	155
Wits	BPROC LLB	3 180	2 125	- 132	- 102	- 145	- 164	120	143	203	219	268	285	318
Zululand	BPROC LLB	11 28	13 27	3 55	3 103	- 57	Did not reply			58	No reply	No reply	No reply	70
TOTAL	BPROC LLB	102 1794	960 1887	1024 2068	386 2332	264 2450								
TOTAL		2823	2847	3092	2718	2714	2115	2242	2436	2735	2834	2830	3358	3297

- FIGURES IN BRACKETS ARE AVERAGES.  
(INFORMATION WAS NOT RECEIVED FROM THAT PARTICULAR UNIVERSITY)

UNIVERSITY GRADUATES : BPROC AND LLB

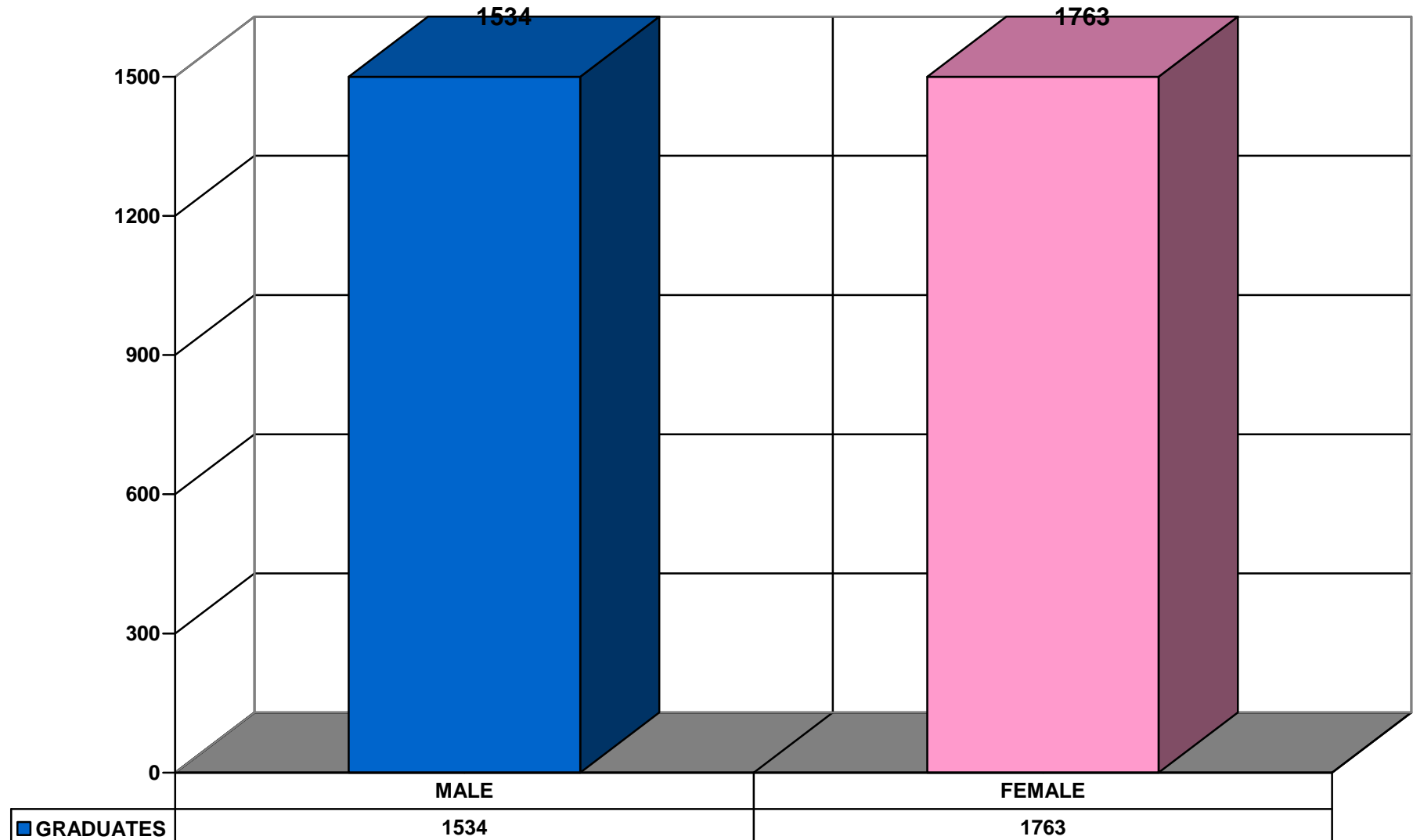


LLB GRADUATES : RACE : 2009



UNIVERSITY OF JOHANNESBURG DID NOT INDICATE RACE

### LLB GRADUATES : GENDER : 2008



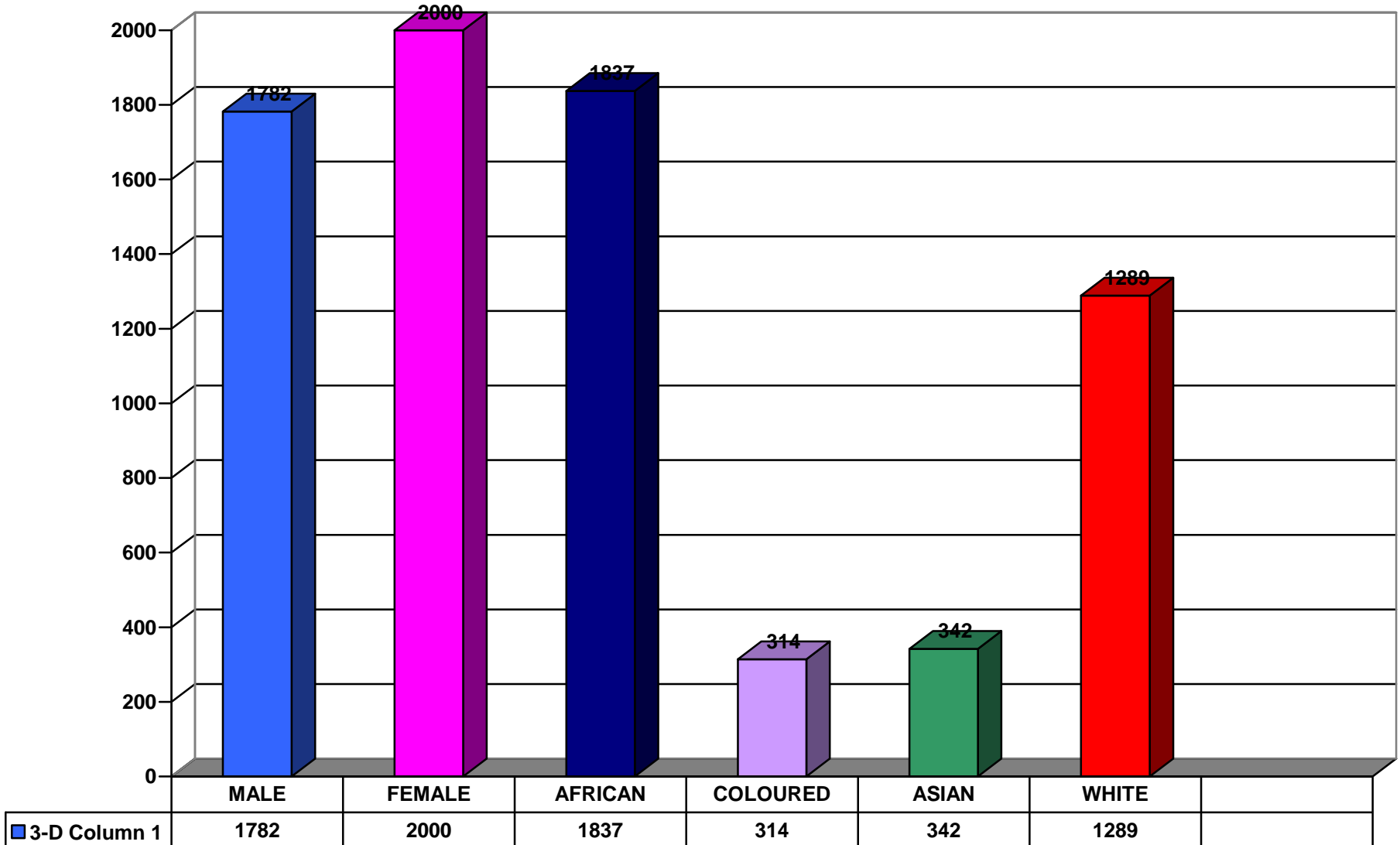
NUMBER OF FINAL YEAR STUDENTS ENROLLED : RECEIVED FROM INDIVIDUAL UNIVERSITIES

UNIVERSITY	1998	1999	2000	2001	LLB									
					2002	2003	2004	2005	2006	2007	2008	2009	2010	
Cape Town LLB	100	106	98	79	85	88	86	109	149	83	127	93	106	
Fort Hare BPROC LLB	51 36	(55) (37)	59 39	(65) (37)	82	70	102	155	112	161	231	111	201	
Free State BPROC LLB	80 60	72 65	27 98	35 57	75	118	84	204	27	173	200	205	124	
Johannesburg BPROC LLB	130 196	87 164	52 195	20 149	170	213	235	241	235	169	282	294	No reply	
KwaZulu Natal Howard College BPROC LLB	100 90	16 235	3 212	- 168	169	209	204	212	263	173	249	296	278	
KwaZulu Natal Pietermaritzburg BPROC LLB	9 80	31 88	22 67	17 53	87	53	88	71	95	74	86	64	79	
KwaZulu Natal Westville BPROC LLB	114 93	66 62	(30) (100)	18 175	146	144	103	137	120					
Limpopo BPROC LLB	136 253	73 231	24 191	- 203	176	153	178	213	275	332	220	274	318	
North-West Mafikeng BPROC LLB	(20) (45)	(15) (50)	10 60	(10) (70)	150	133	100	304	268	No reply	5	139	154	
North-West Potchefstroom BPROC LLB	44 57	37 97	16 138	2 122	107	109	111	170	154	148	187	264	321	
NMMU BPROC LLB	30 49	25 88	30 96	5 99	82	85	83	194	155	91	199	151	204	
Pretoria BPROC LLB	210 307	182 290	60 547	13 510	404	192	400	476	555	330	554	514	495	
Rhodes LLB	27			40	46		60	63	67	39	62	77	69	

		1998	1999	2000	2001	LLB								
						2002	2003	2004	2005	2006	2007	2008	2009	2010
<b>Stellenbosch</b>	<b>LLB</b>	108	99	100	150	135	131	149	146	73	133	82	89	93
<b>UNISA</b>	<b>BPROC LLB</b>	372 498	462 528	265 463	266 422	536	462	521	427	450	530	517	533	494
<b>Venda</b>	<b>BPROC LLB</b>	37 31	18 26	25 28	(30) (25)	63	52	63	105	181	215	71	239	193
<b>Vista</b>	<b>BPROC LLB</b>	182 134	- 111	77 152	34 133	(150)	365	(250)						
<b>Walter Sisulu (ex Transkei)</b>	<b>BPROC LLB</b>	150 136	43 65	2 133	30 148	124	78	109	102	106	137	200	275	<b>No reply</b>
<b>Western Cape</b>	<b>BPROC LLB</b>	125 151	51 184	37 208	18 209	199	183	179	168	209	221	229	188	247
<b>Wits</b>	<b>BPROC LLB</b>	2 115	- 120	- 89	- 119	176	183	179	168	209	303	415	260	282
<b>Zululand</b>	<b>BPROC LLB</b>	4 24	11 53	1 95	1 60	88	<b>No reply received</b>				82	<b>No reply</b>		124
<b>TOTAL:</b>	<b>BPROC</b>	1562	1266	740	564									
<b>TOTAL:</b>	<b>LLB</b>	2472	2731	3144	2896									
<b>GRAND TOTAL</b>		<b>4124</b>	<b>3997</b>	<b>3884</b>	<b>3355</b>	<b>3251</b>	<b>3046</b>	<b>3535</b>	<b>3755</b>	<b>3746</b>	<b>3506</b>	<b>3916</b>	<b>4066</b>	<b>3782</b>



**FINAL LLB STUDENTS ENROLLED 2010 : GENDER AND RACE**

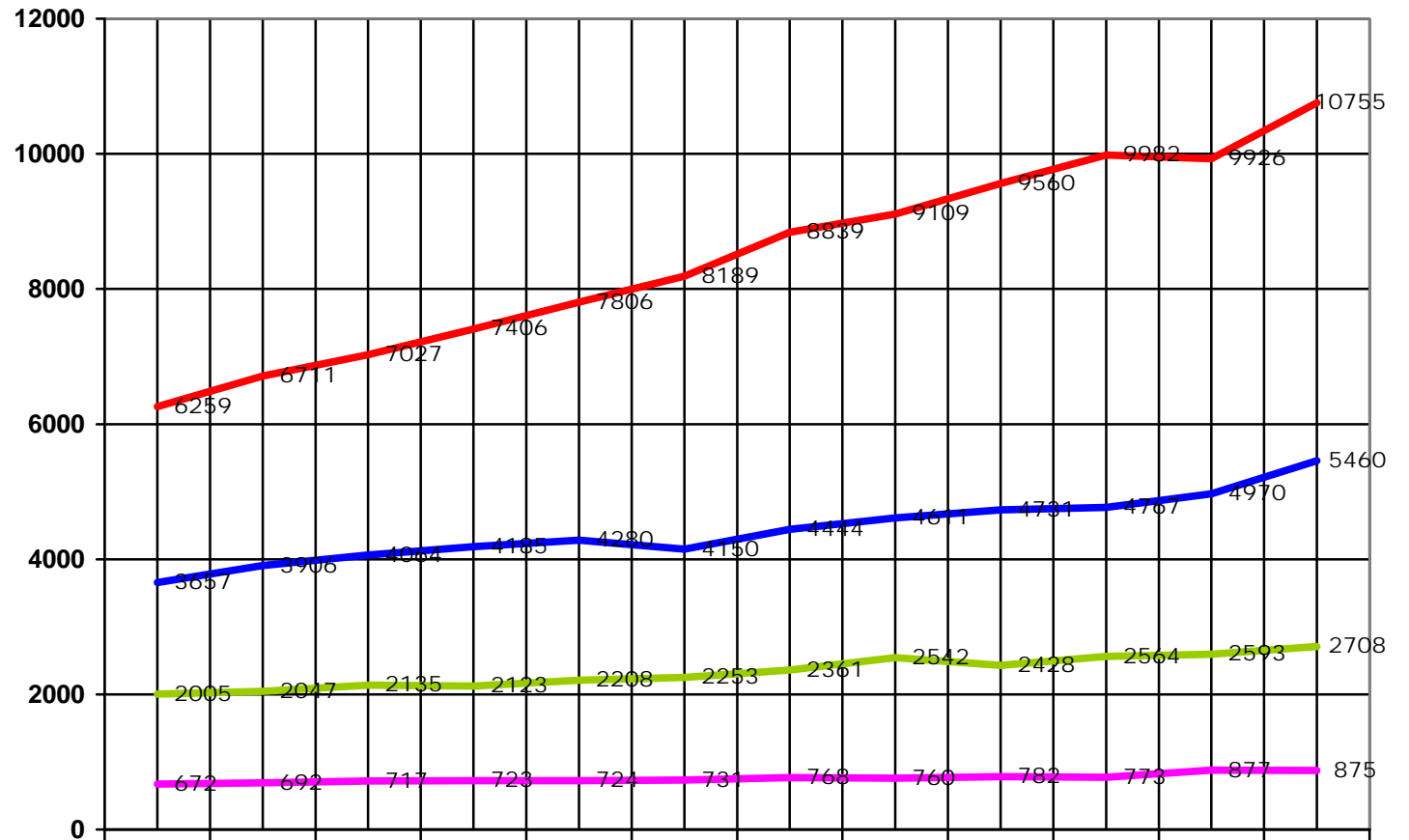


## ATTORNEY'S PROFESSION

### PRACTISING ATTORNEYS

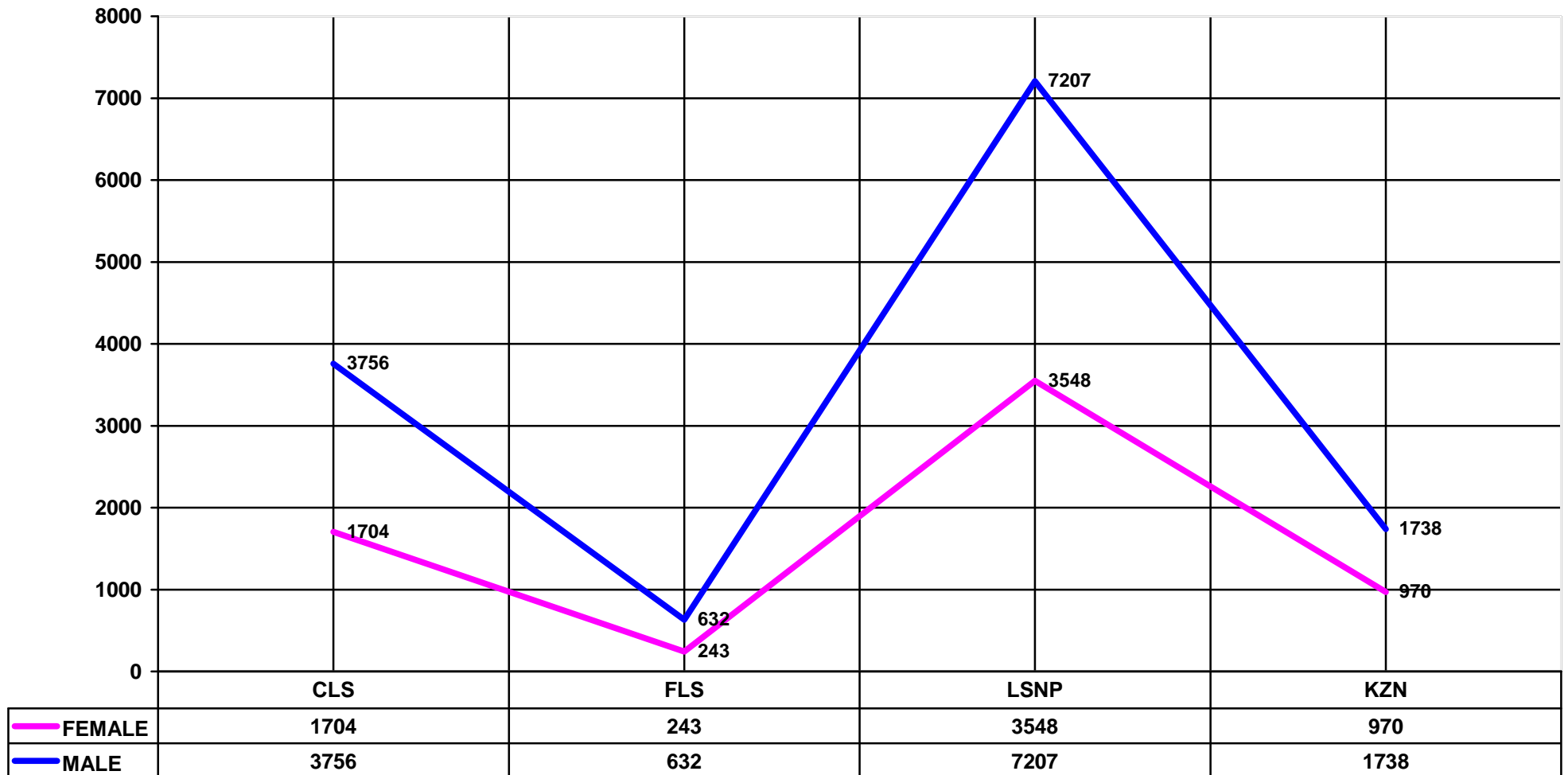
	2000	2001	2002	2003	2004 (1.4.04)	2005 (1.7.05)	2006 (1.4.06)	2007 (1.4.07)	2008 (1.4.08)	2009 (1.4.09)	2010 (1.04.10)
CAPE LAW SOCIETY	3906	4064	4185	4280	4150	4444	4661	4731	4767	4970	5460
LAW SOCIETY OF THE FREE STATE	692	717	724	724	731	768	760	782	773	877	875
KWA-ZULU NATAL LAW SOCIETY	2047	2135	2208	2208	2253	2361	2542	2428	2564	2593	2708
LAW SOCIETY OF THE NORTHERN PROVINCES	6711	7027	7806	7806	8189	8839	9109	9560	9982	9926	10755
<b>TOTAL</b>	<b>13 356</b>	<b>14 437</b>	<b>15 018</b>	<b>15 018</b>	<b>15 323</b>	<b>16 285</b>	<b>17 072</b>	<b>17501</b>	<b>18086</b>	<b>18366</b>	<b>19798</b>

**PRACTISING ATTORNEYS : INDIVIDUAL LAW SOCIETIES**

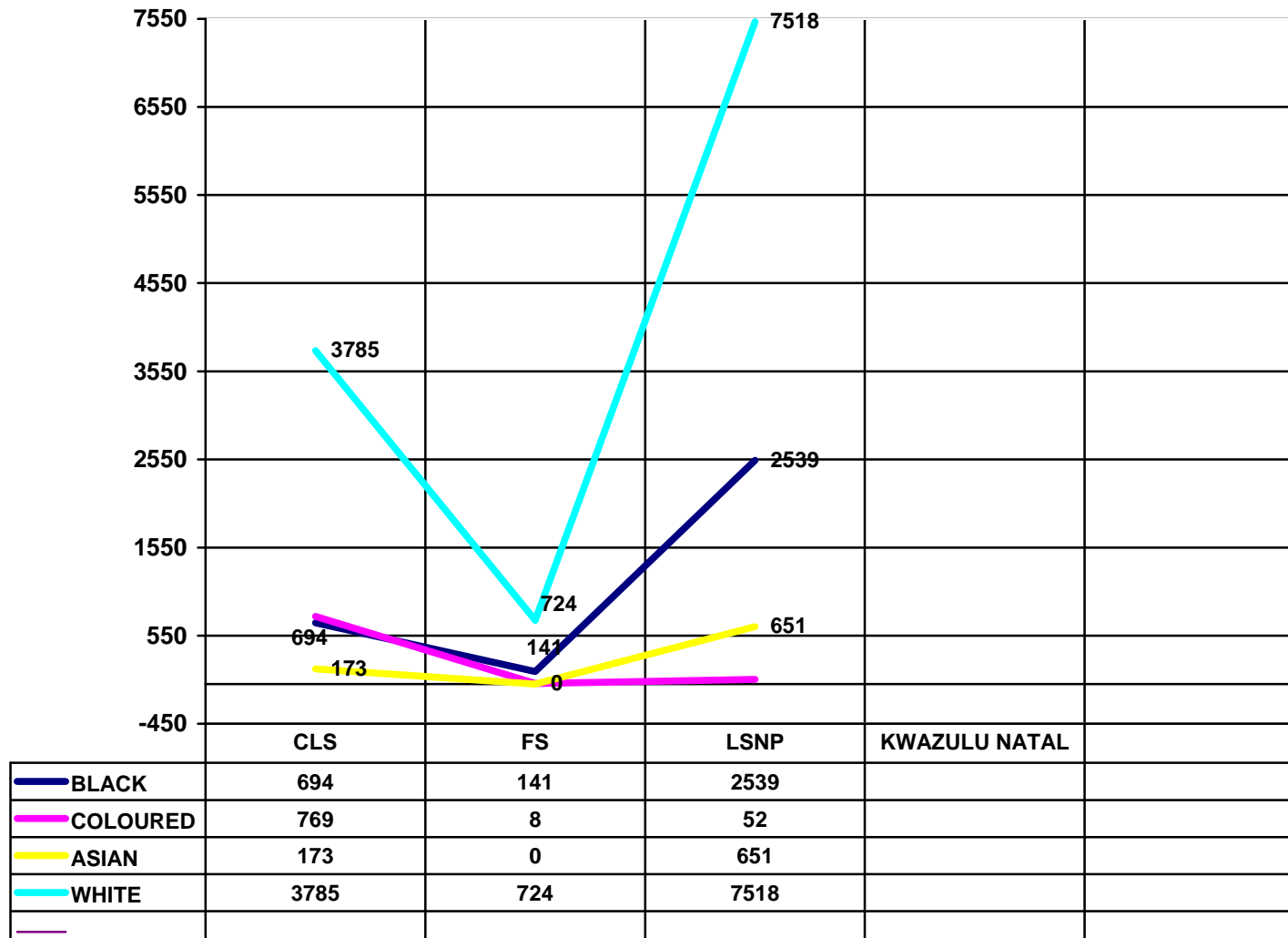


	1999	2000	2001	2002	2003	2004	AS AT JUNE 2005	Apr-06	Apr-07	Apr-08	Apr-09	Apr-10
CAPE LAW SOCIETY	3657	3906	4064	4185	4280	4150	4444	4611	4731	4767	4970	5460
KWA-ZULU NATAL LAW SOCIETY	2005	2047	2135	2123	2208	2253	2361	2542	2428	2564	2593	2708
FREE STATE	672	692	717	723	724	731	768	760	782	773	877	875
NORTHERN PROVINCES	6259	6711	7027	7406	7806	8189	8839	9109	9560	9982	9926	10755

PRACTISING ATTORNEYS : GENDER



**PRACTISING ATTORNEYS : RACE**

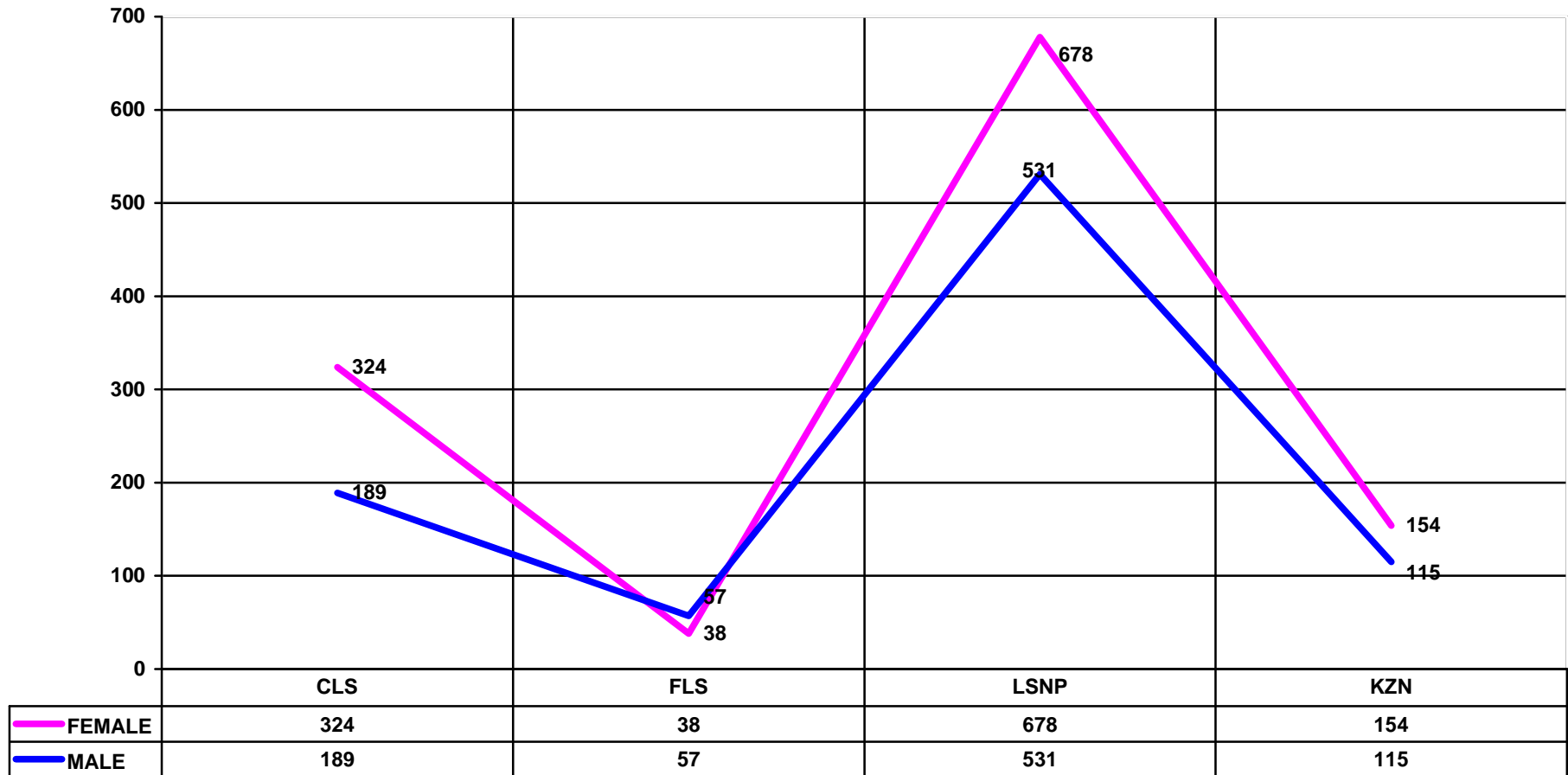


Natal Law Society – stated that stats on race are not available

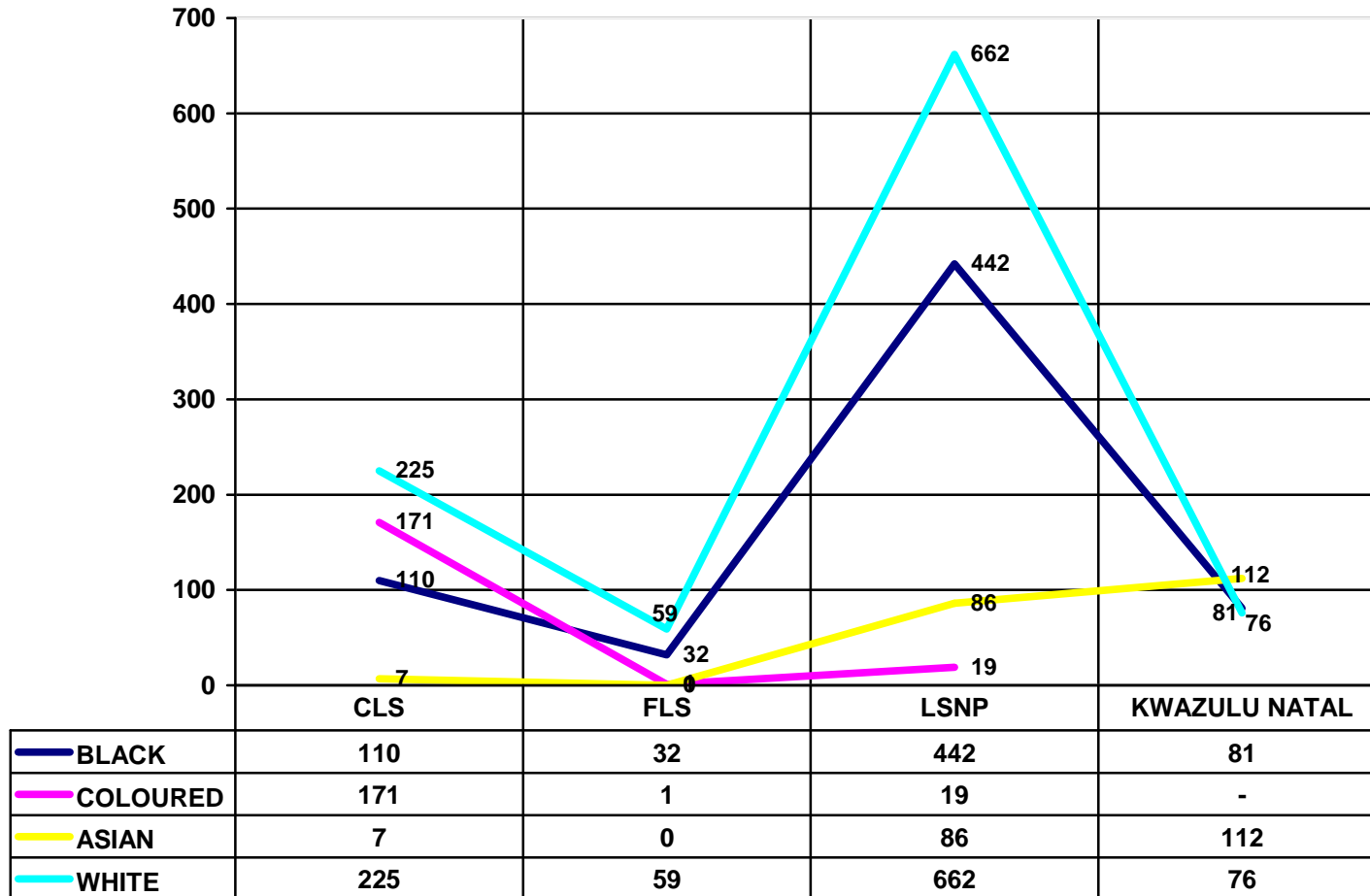
## ARTICLES REGISTERED

	2000	2001	2002	2003 (1.4.03)	2004 (1.4.04)	2005 1.7.05- 1.4.06	2006 1.7.06- 1.4.07	2007 1.7.07- 1.4.08	2008 1.7.08- 1.4.09	2009 1.7.09- 1.4.10
CAPE LAW SOCIETY	472	502	504	484	498	542	407	410	367	513
LAW SOCIETY OF THE FREE STATE	129	97	128	38	45	91	86	63	79	95
KWA-ZULU NATAL LAW SOCIETY	280	328	319	148	121	252	272	143	112	269
LAW SOCIETY OF THE NORTHERN PROVINCES	1303	1300	1310	1216	1251	1108	1072	1255	1288	1209
<b>TOTAL</b>	<b>2 184</b>	<b>2 227</b>	<b>2 251</b>	<b>1 886</b>	<b>1 915</b>	<b>1 993</b>	<b>1 837</b>	<b>1871</b>	<b>1846</b>	<b>2086</b>

ARTICLES REGISTERED : GENDER



ARTICLES REGISTERED : RACE

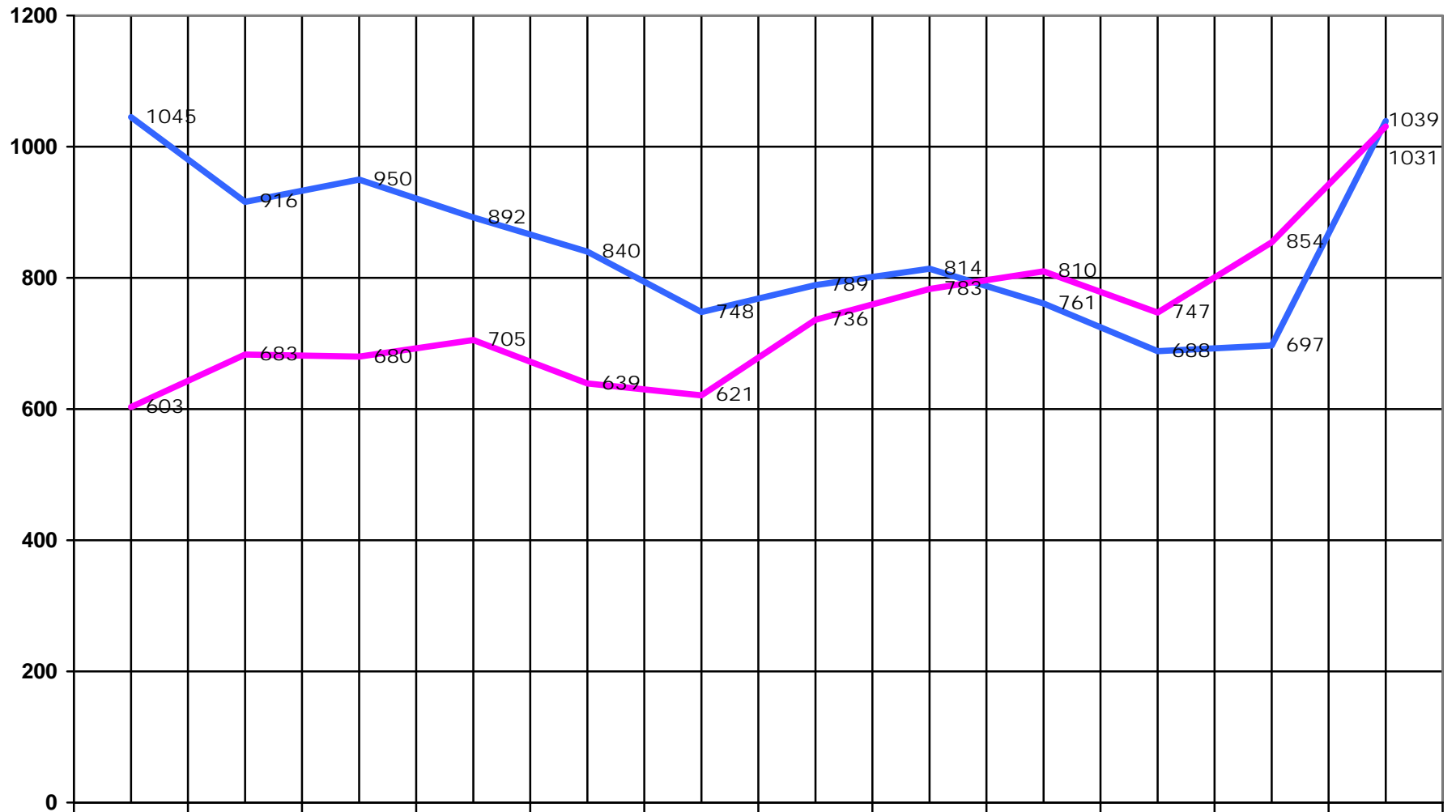




**ATTORNEYS ADMITTED**

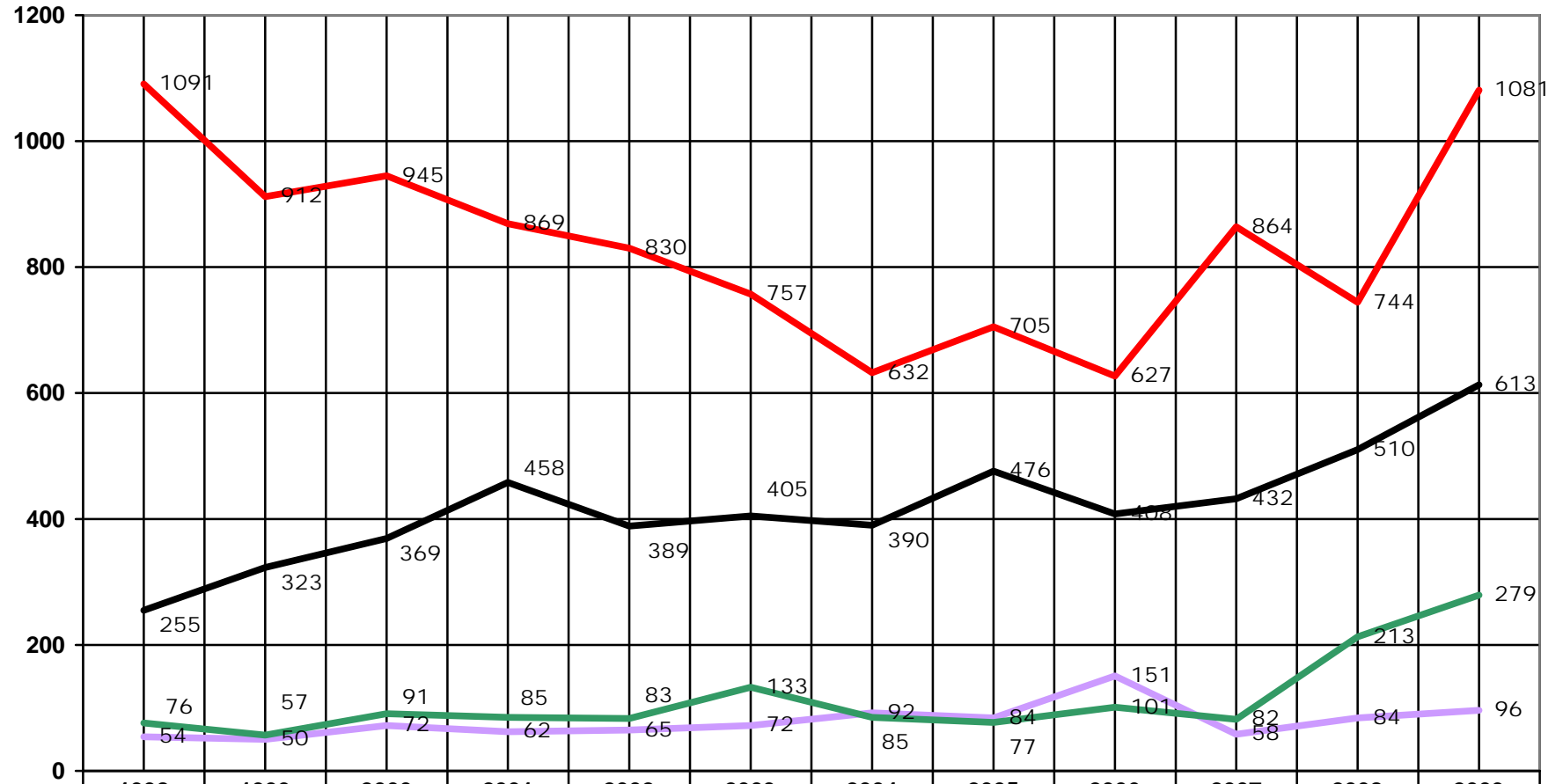
	1999	2000	2001	2002	2003	2004	2005	2006	2007	2008	2009
Cape Law Society	391	421	431	389	319	324	339	321	242	262	263
Law Society Of The Free State	69	101	92	80	73	76	81	89	145	52	90
Kwa-Zulu Natal Law Society	185	131	114	105	106	325	251	284	110	280	281
Law Society Of The Northern Provinces	954	977	960	905	871	800	926	877	938	957	1436
<b>TOTAL</b>	<b>1599</b>	<b>1630</b>	<b>1597</b>	<b>1479</b>	<b>1369</b>	<b>1525</b>	<b>1597</b>	<b>1571</b>	<b>1435</b>	<b>1581</b>	<b>2070</b>

**ATTORNEYS ADMITTED : GENDER**



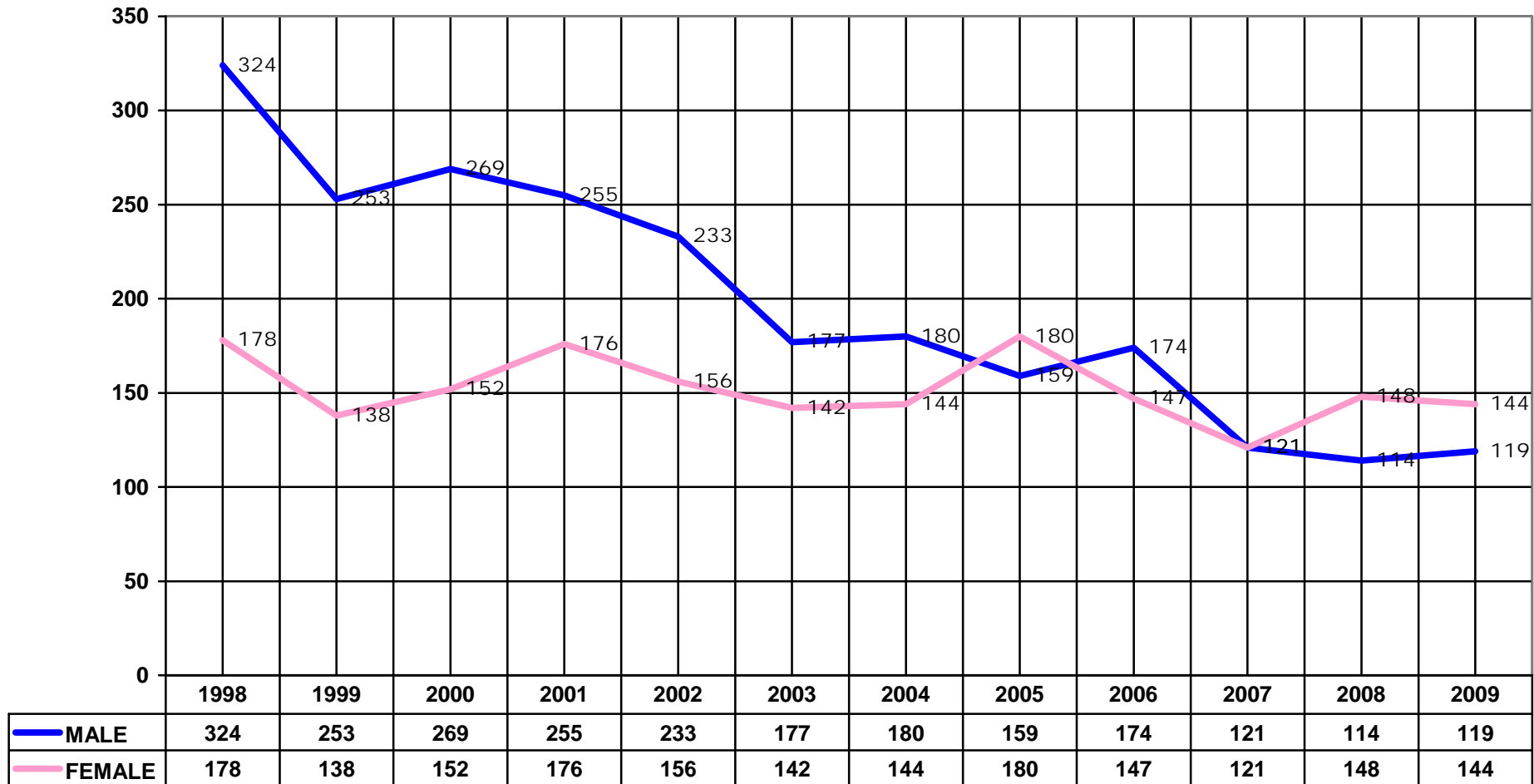
<b>MALE</b>	<b>1045</b>	<b>916</b>	<b>950</b>	<b>892</b>	<b>840</b>	<b>748</b>	<b>789</b>	<b>814</b>	<b>761</b>	<b>688</b>	<b>697</b>	<b>1039</b>
<b>FEMALE</b>	<b>603</b>	<b>683</b>	<b>680</b>	<b>705</b>	<b>639</b>	<b>621</b>	<b>736</b>	<b>783</b>	<b>810</b>	<b>747</b>	<b>854</b>	<b>1031</b>

**ATTORNEYS ADMITTED : RACE**

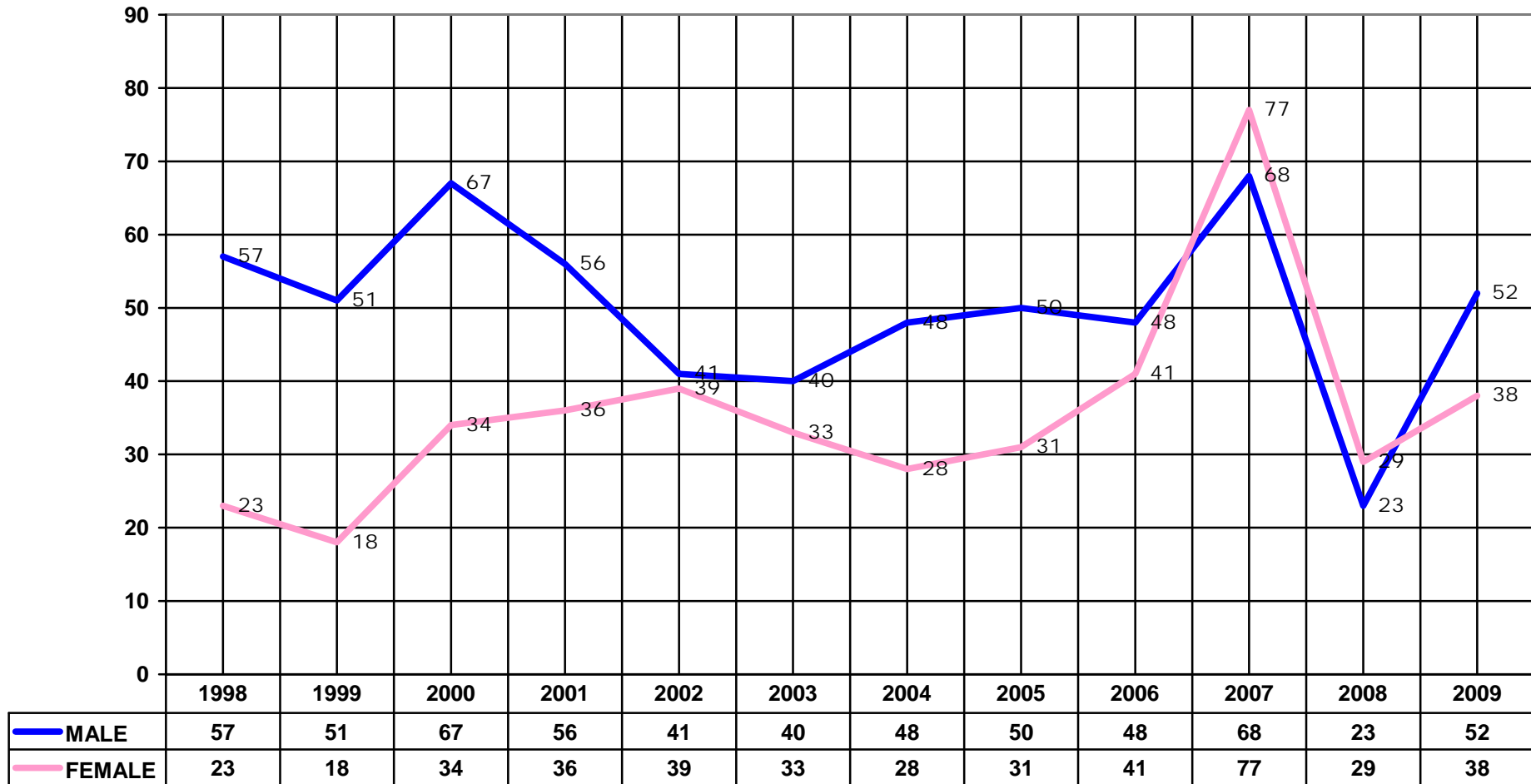


	1998	1999	2000	2001	2002	2003	2004	2005	2006	2007	2008	2009
<b>— AFRICAN</b>	255	323	369	458	389	405	390	476	408	432	510	613
<b>— COLOURED</b>	54	50	72	62	65	72	92	84	151	58	84	96
<b>— ASIAN</b>	76	57	91	85	83	133	85	77	101	82	213	279
<b>— WHITE</b>	1091	912	945	869	830	757	632	705	627	864	744	1081

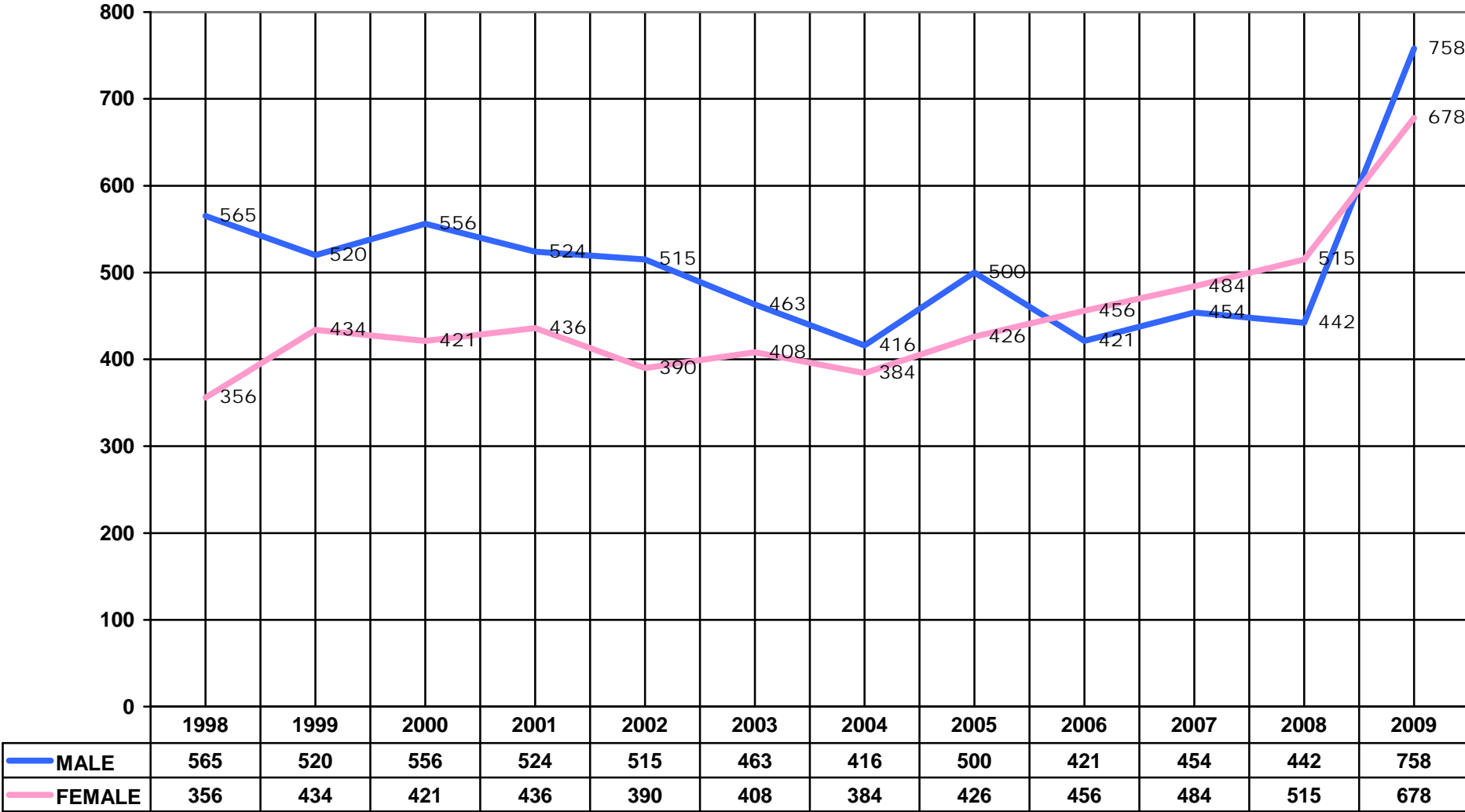
**ATTORNEYS ADMITTED : CAPE LAW SOCIETY : GENDER**



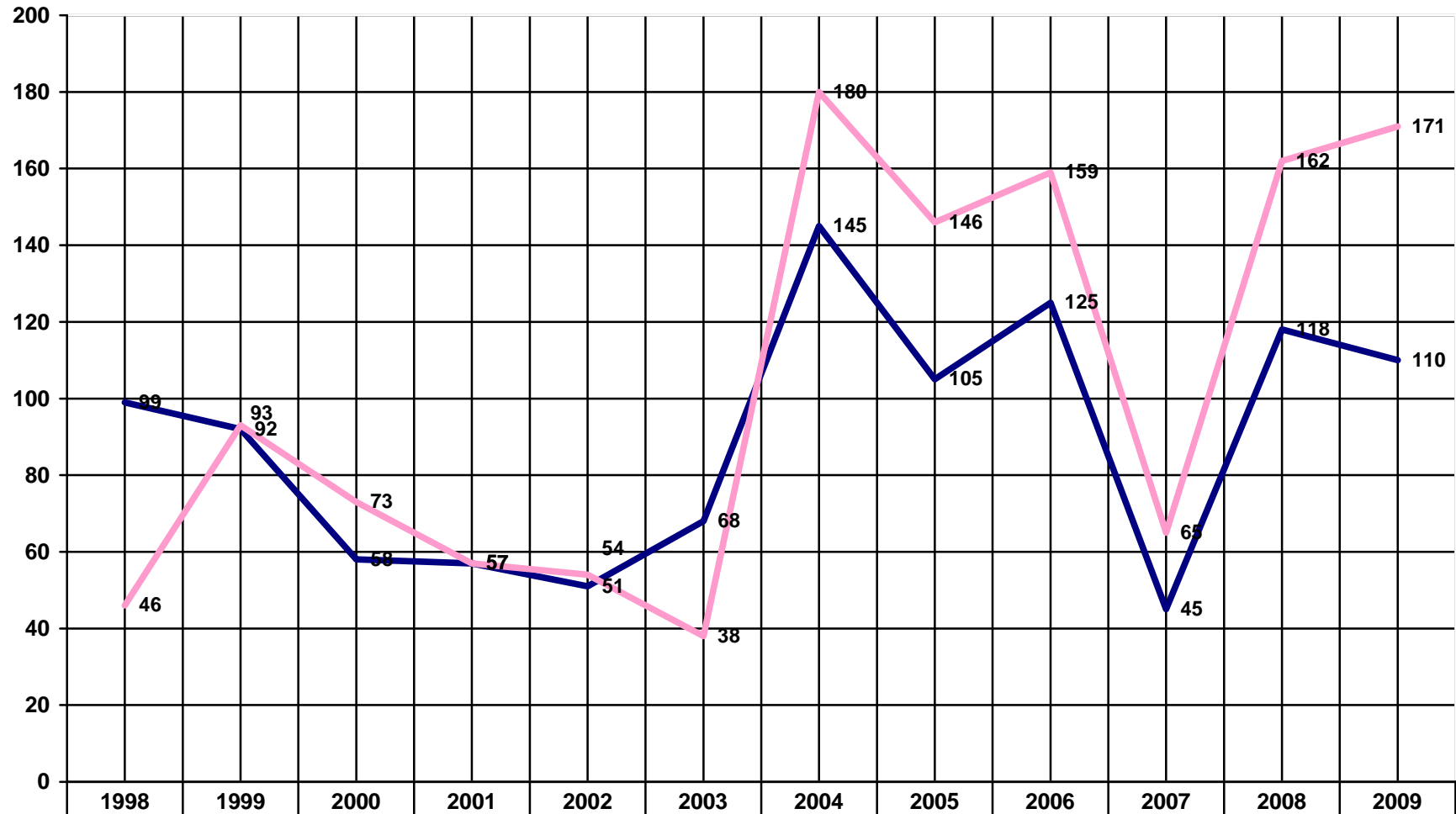
**ATTORNEYS ADMITTED : FREE STATE SOCIETY : GENDER**



**ATTORNEYS ADMITTED : LAW SOCIETY NORTHERN PROVINCES : GENDER**

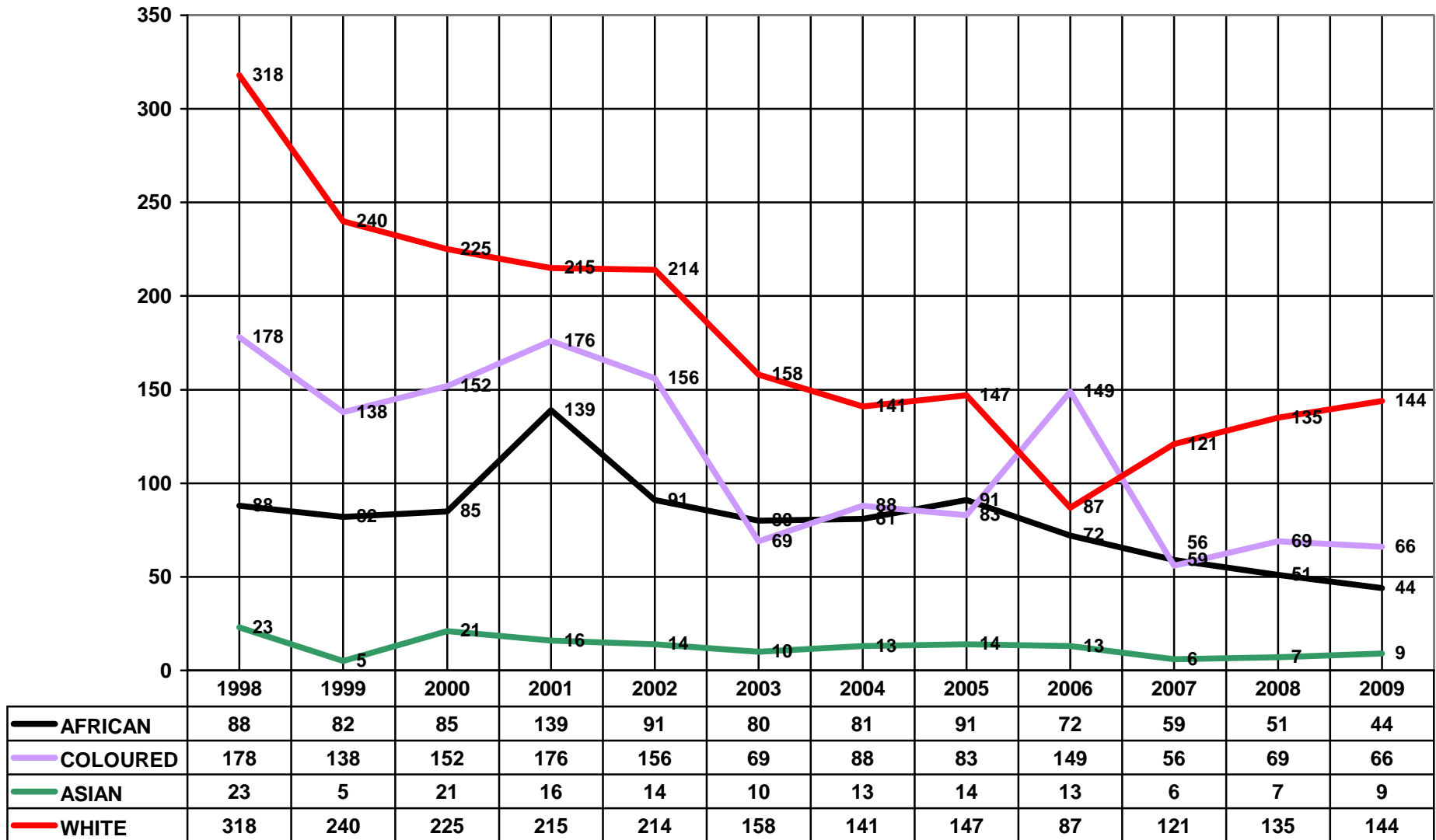


ATTORNEYS ADMITTED : KWAZULU NATAL LAW SOCIETY : GENDER



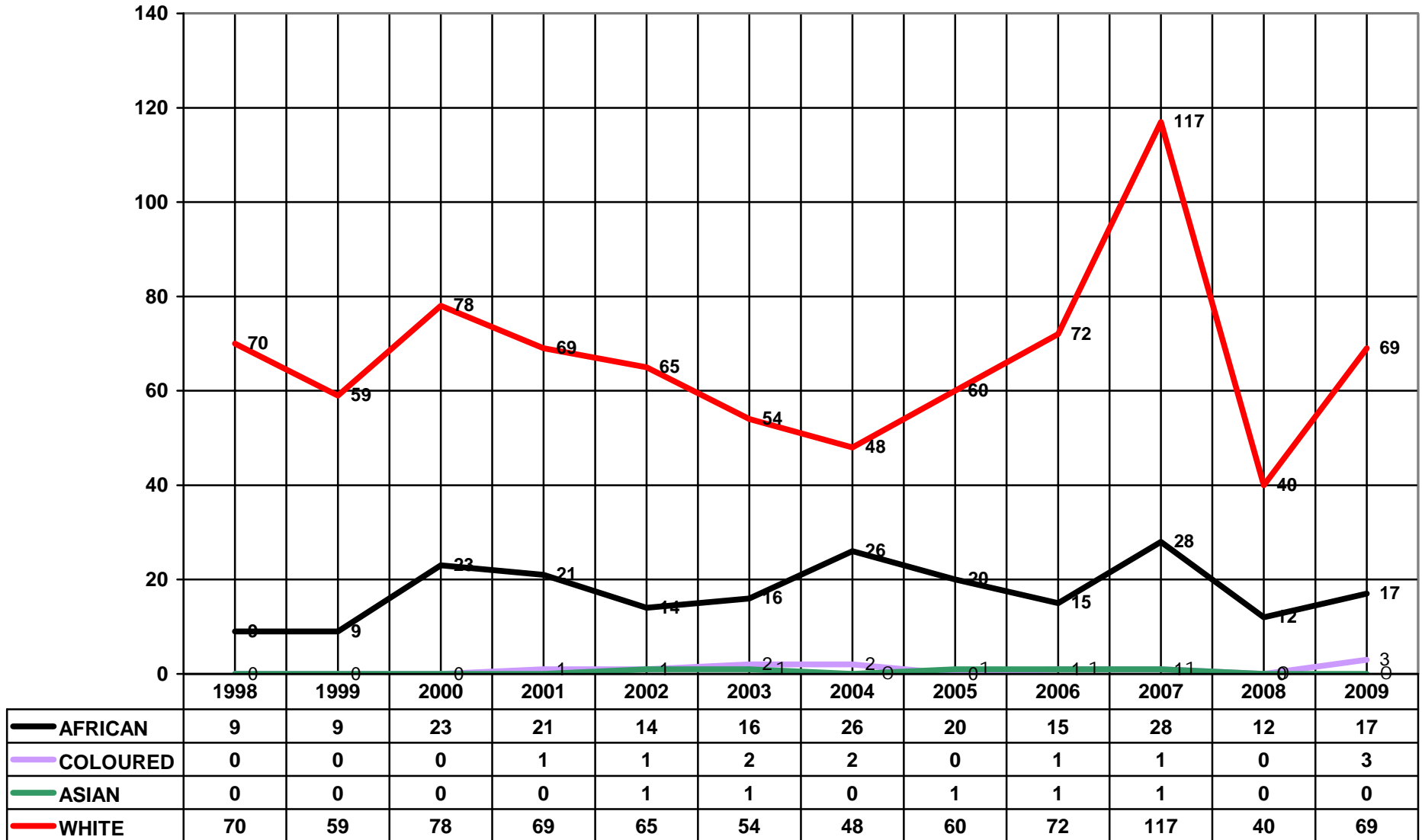
<b>MALE</b>	99	92	58	57	51	68	145	105	125	45	118	110
<b>FEMALE</b>	46	93	73	57	54	38	180	146	159	65	162	171

ATTORNEYS ADMITTED : CAPE LAW SOCIETY : RACE

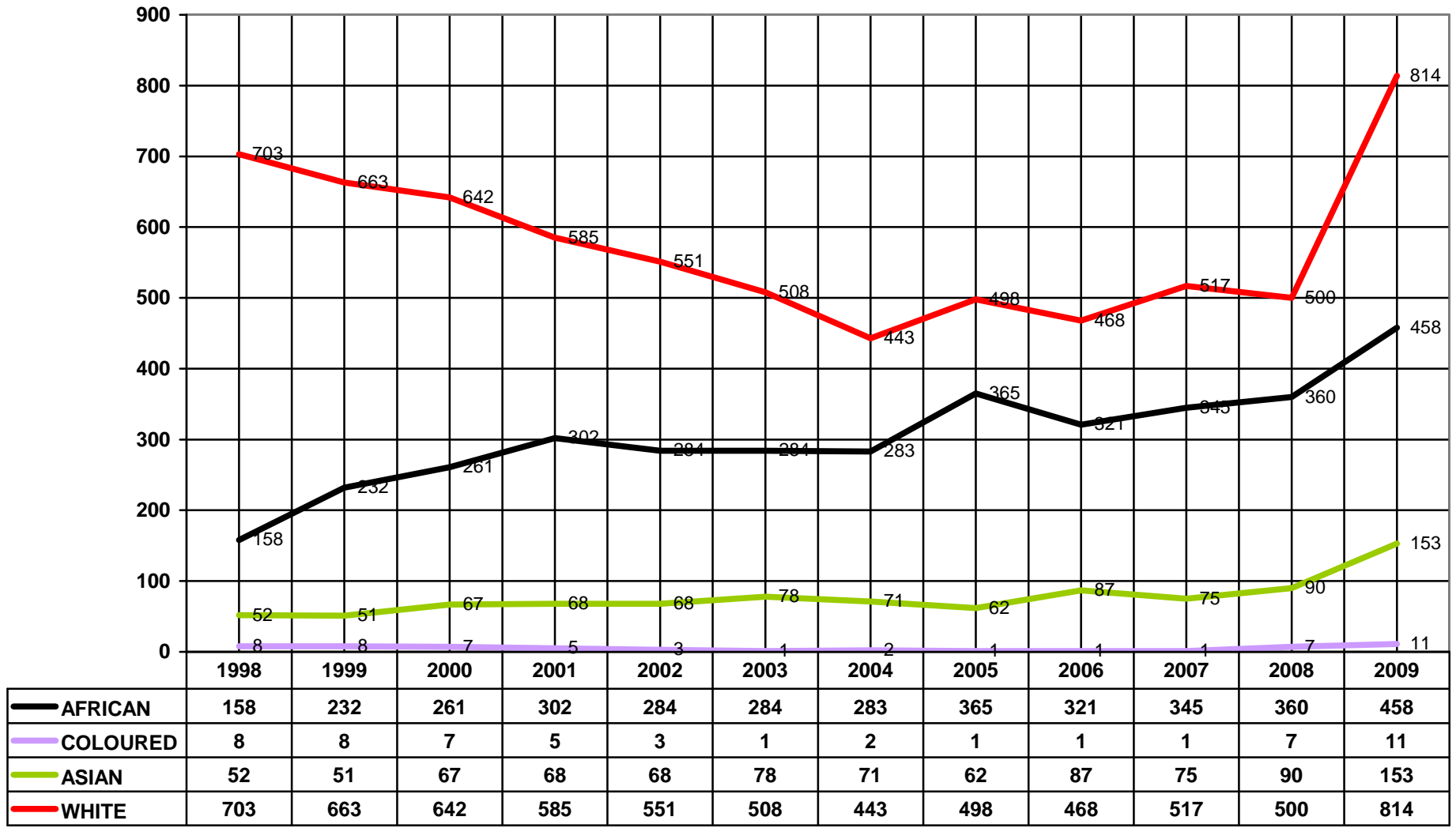




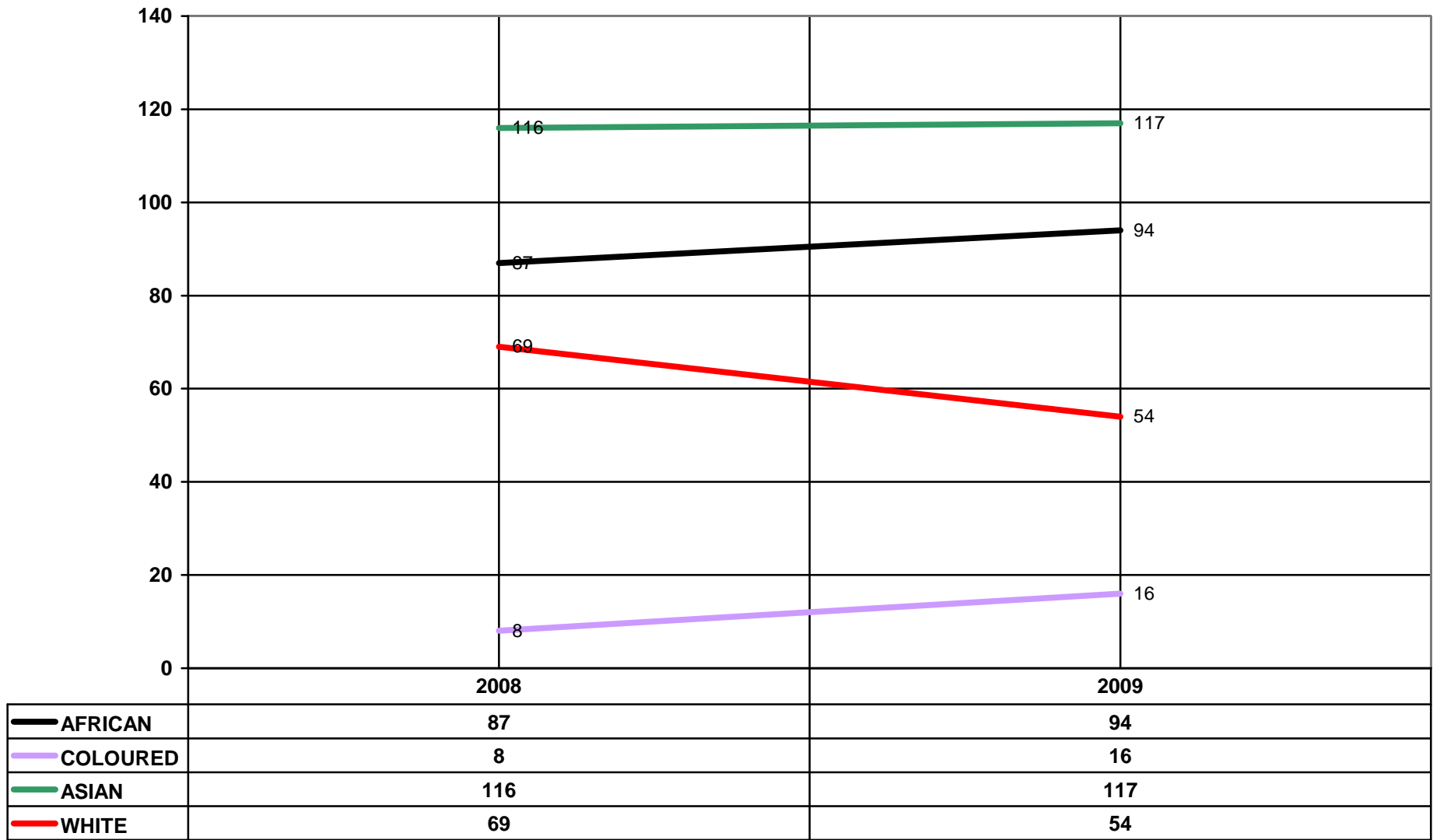
ATTORNEYS ADMITTED : FREE STATE LAW SOCIETY : RACE



ATTORNEYS ADMITTED : NORTHERN PROVINCES : RACE



**ATTORNEYS ADMITTED : KWAZULU NATAL LAW SOCIETY : RACE**



**KWAZULU NATAL LAW SOCIETY DID NOT DIFFERENTIATE RACE PREVIOUSLY**