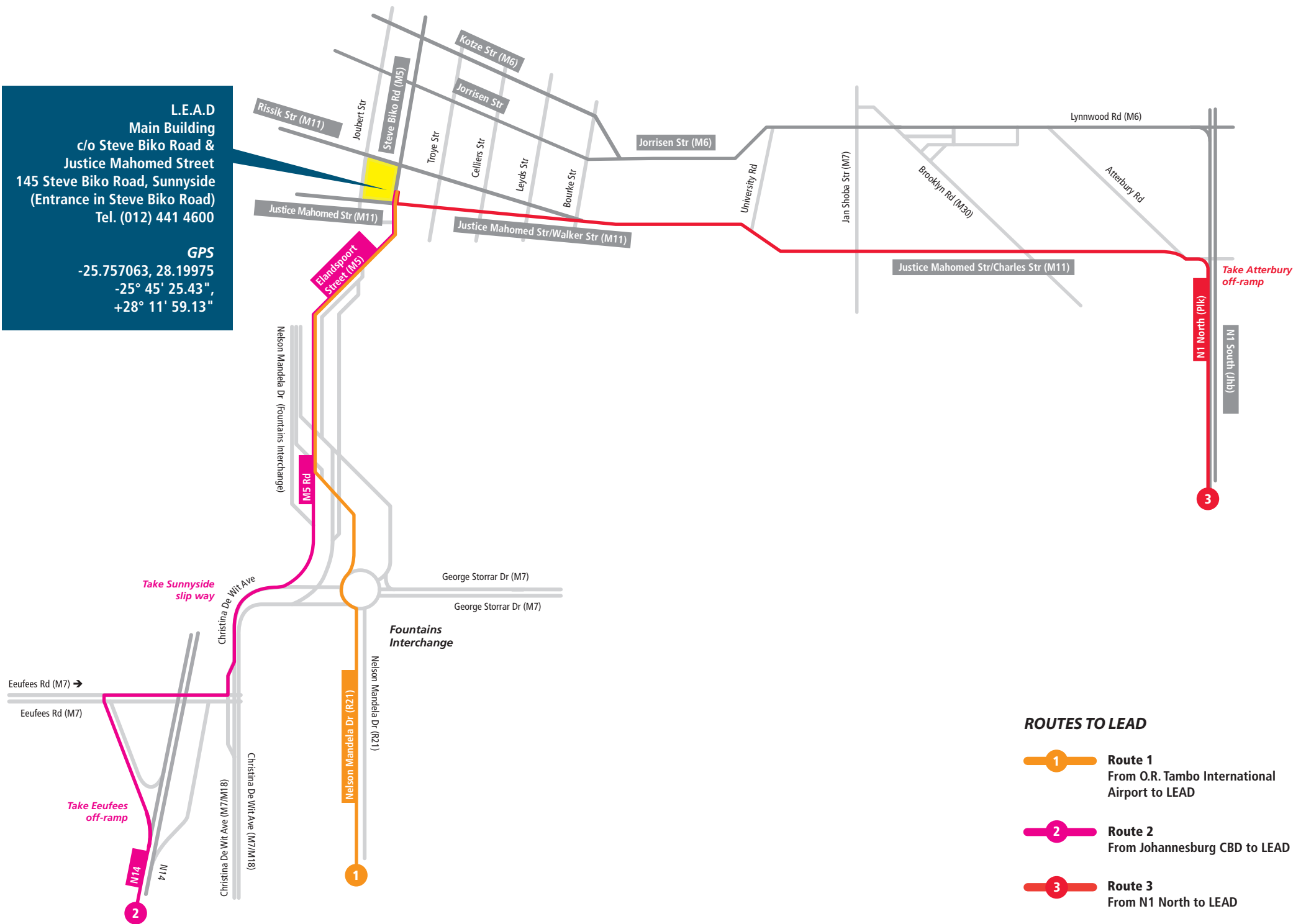


L.E.A.D
Main Building
 c/o Steve Biko Road &
 Justice Mahomed Street
 145 Steve Biko Road, Sunnyside
 (Entrance in Steve Biko Road)
 Tel. (012) 441 4600

GPS
 -25.757063, 28.19975
 -25° 45' 25.43",
 +28° 11' 59.13"



ROUTES TO LEAD

- 1** **Route 1**
From O.R. Tambo International Airport to LEAD
- 2** **Route 2**
From Johannesburg CBD to LEAD
- 3** **Route 3**
From N1 North to LEAD

Directions to LEAD

Contact details

Main Building
c/o Steve Biko Road &
Justice Mahomed Street
145 Steve Biko Road, Sunnyside
(Entrance in Steve Biko Road)
Tel. (012) 441 4600

GPS

-25.757063, 28.19975
-25° 45' 25.43",
+28° 11' 59.13"



Route 1

From O.R. Tambo International Airport to LEAD

1. Exit the Airport staying in the Pretoria lanes.
2. Once on the freeway - Voortrekker road (M96) - immediately move into left hand lane.
3. Take the Pretoria on-ramp that turns sharply left onto the Kempton Park/Pretoria Freeway or the R21. Continue along the R21 for approx 45km.
4. Once in the Pretoria area the R21 becomes Nelson Mandela Drive and approaches the Fountains Interchange.
5. Keep to the left hand lane, around the circle following the Sunnyside signs. This road will merge with the M5 which becomes Elandspoort Street (M5).
6. Keep in the left hand lane and continue along Elandspoort Street (M5) till you reach the traffic lights where it crosses Justice Mahomed Street (M11). (Here Elandspoort Street (M5) becomes Steve Biko Road (M5)).
7. Cross over the traffic light, keeping in the far left hand lane - turn left into the first entrance on your left hand side.
8. As you enter the parking area, the LEAD building is on the left hand side.

Route 2

From Johannesburg CBD to LEAD

1. On the N1 approaching the Brakfontein interchange, continue heading towards Pretoria central (N1 merges into the N14).
2. Continue along the N14 and take the Euefees Road (M7) off ramp. Turn right at the T-junction into Euefees Road (M7).
3. Immediately after passing under the first bridge turn left at the Pretoria/Brooklyn sign into Christina De Wit Avenue (M7/M18).
4. Stay in the second to left lane and follow Sunnyside signs taking the first split left and the second split right onto the M5. The M5 becomes Elandspoort Street (M5).
5. Keep in the left hand lane and continue along Elandspoort Street (M5) till you reach the traffic lights where it crosses Justice Mahomed Street (M11). (Here Elandspoort Street (M5) becomes Steve Biko Road (M5)).
6. Cross over the traffic light, keeping in the far left hand lane - turn left into the first entrance on your left hand side.
7. As you enter the parking area, the LEAD building is on the left hand side.

Route 3

From N1 North to LEAD

1. Travel North along the N1 (towards Polokwane).
2. Take the Atterbury Road off-ramp and keep in the left hand lane.
3. Continue along Atterbury Road and take the first split left into Charles Street.
4. Continue along Charles Street which will become Justice Mahomed Street/Walker Street.
5. Continue along Justice Mahomed Street (M11), keeping right, till you reach the traffic lights where it crosses Steve Biko Road (M5).
6. Turn Right into Steve Biko Road (M5) and immediately move into the far left hand lane.
7. Turn left into the first entrance on your left hand side.
8. As you enter the parking area, the LEAD building is on the left hand side.